



LONDON COLNEY NEWS

Bringing the Community Together

December 2024



IMAGE BY FELICITY JANE

**HOW MANY
FESTIVE FOXES
CAN YOU FIND!**

What a **THROW BACK** ... Our very **FIRST** advert in the Parish magazine some **TEN YEARS AGO!!**



OLIVER
& AKERS



0.65%
(+VAT)

Having lived and worked in London Colney for years **Anthony Oliver** has partnered up with **Vic Akers** to offer a different approach to selling your property.

'The personal touch' that we offer is **UNIQUE**, we are not simply open and available Mon-Sat 09.00-18.00 we appreciate that life is busier than that.

Our promotional fee is 0.65% (+VAT) for ALL INSTRUCTIONS

Call today for a free confidential valuation

01727 580085



Sales recently agreed in your area!!

Some things have changed...but we are still **THE LOCAL** agent for London Colney!!



OLIVER
& AKERS

Estate Agency with a personal touch!

www.oliverandakers.com

4

CHANGES ARE COMING



HAVE WE GOT SOME

news for you!



16

HAPPY BIRTHDAY DOODLEBUGS



9

BERRY TASTIC



27

KEEP AN EYE ON THE DIARY... THERE IS SOMETHING FOR EVERYONE!



PARISH DETAILS

Elected Representatives

NORTH WEST WARD

Councillor Tony Lillico
T: 07901 922 404
E: Cllr.tony.lillico@londoncolney-pc.gov.uk

Councillor Liz Needham
E: Cllr.liz.needham@londoncolney-pc.gov.uk

Cllr Pok Thoree
E: Cllr.pok.thoree@londoncolney-pc.gov.uk

Cllr Liz Winstone
E: Cllr.liz.winstone@londoncolney-pc.gov.uk

EAST & SOUTH WARD

Cllr Karl Mugele
Cllr.karl.mugele@londoncolney-pc.gov.uk

Cllr Rob Prowse
Cllr.rob.prowse@londoncolney-pc.gov.uk

Cllr Dave Winstone
Cllr.dave.winstone@londoncolney-pc.gov.uk

NAPSURY WARD
Cllr Vicki Hopcroft
Cllr.vicki.hopcroft@londoncolney-pc.gov.uk

Cllr Keith Loud
Cllr.keith.loud@londoncolney-pc.gov.uk

ST ALBANS DISTRICT COUNCIL

London Colney Ward
Councillor Tony Lillico
T: 07901 922 404
E: Cllr.T.Lillico@councillor.stalbans.gov.uk

Councillor Mike Hobday
T: 0785329207
E: Cllr.m.hobday@councillor.stalbans.gov.uk

Councillor Emma Turnbull
E: Cllr.e.turnbull@councillor.stalbans.gov.uk

ST ALBANS DISTRICT COUNCIL - Napsbury, Park Street Ward
Councillor Syed Abidi
T: 07980 323673
E: cllr.s.abidi@councillor.stalbans.gov.uk

Councillor Terrie Smith
T: 07850 056 835
E: cllr.t.smith@councillor.stalbans.gov.uk

Councillor Nuala Webb
M: 0777 9935354
E: cllr.n.webb@councillor.stalbans.gov.uk

HERTFORDSHIRE COUNTY COUNCIL
Councillor Sarah Tallon
M: 07518 818 601
E: contact@sarahatallon.org

MEMBER OF PARLIAMENT
Daisy Cooper MP
House of Commons,
Westminster, London SW1A 0AA
T: 01727 519 900
E: daisy.cooper.mp@parliament.uk

Chief Executive Direct Line Jane Johnstone: 01727 261 101 E: ceo@londoncolney-pc.gov.uk

London Colney Parish Council, Caledon Community Centre, Caledon Road, London Colney, AL2 1PU
T: 01727 821314 | E: info@londoncolney-pc.gov.uk | W: www.londoncolney-pc.gov.uk

ADVERTISE WITH US

CIRCULATION - The London Colney News is distributed to over 4,000 households. If you would like to contribute to the content of the next issue, please get in touch. We also offer a design service if you would need an advert created. For more information email us: events@londoncolney-pc.gov.uk

NEXT ISSUE: MARCH 2025 AD & COPY DEADLINE: 1ST FEBRUARY

The Parish Council does not endorse the advertisements seen in this publication.

Articles should be sent to the editor, Events and Community Officer c/o London Colney Parish Council, Caledon Community Centre, Caledon Road, London Colney, AL2 1PU or please email: events@londoncolney-pc.gov.uk. The editors of this magazine rely on contributors for the accuracy of their articles. We regret that we cannot check all the facts, but we are happy to consider printing corrections if errors are brought to our attention. Whilst the editors endeavour to include all items submitted by the deadline given, pressure on space may sometimes mean that items will be held over for consideration in future issues and may not therefore appear in the current issue. Articles may be edited for length or clarity.

Designed by MINIMIZE Creative Solutions

CHEERS TO A NEW YEAR OF EXCITING EVENTS



**Chairman
Tony Lillico**

End Of Year Events

By the time you read this London Colney's key November and December events will be over. The Fireworks and Remembrance Day Parade both went off really well. At the fireworks show I was taking payments with the lunch club credit card machine connected over my mobile phone and every payment went through without a hitch!

I was also honoured to be able to give thanks on behalf of the village to all of those residents who currently service or have served in our armed forces. I have to give my thanks to the team that put together the events, they seem to get better every time.

LOCAL PLAN

The saga of the local plan continues, it was great to see many of you at the public meeting on November 20th where we had a chance to update the community and listen to feedback.

For those that could not attend that were not present the current plan is to try to get the latest plan, which includes 391 new homes in London Colney, submitted for review before the new governments increased housing targets are implemented.

Based on feedback from previous consultations the largest site on Shenley Lane has been reduced from 405 to 324 properties and the 53-property site in White Horse Lane has been removed.

The parish council has acknowledged that London Colney will need to take its fair share of the 14,603 houses that the

government has decreed have to be built in St. Albans District and that 391 (2.6%) is a reasonable share for London Colney as the third biggest settlement in the district after St. Albans and Harpenden.

But there are issues in the detail where we still need to fight, including making sure that motor vehicular access to the Shenley Lane development is not through the Napsbury Estate and Parish council playing fields.

Whilst it is outside the parish a proposed site of 274 houses at the Radlett end of Harper Lane will cause huge inconvenience to us all, if it is not accompanied by widening of the bridge over the railway to take 2-way traffic and improvements to the junction with Watling Street. So we will be pushing on this also.

FREIGHT TERMINAL

Despite huge efforts by the "Fight the Freight" team, the legal challenge to the sale of public land by Hertfordshire County Council to the developer was not allowed and the development of the terminal is now underway.

We have already seen disruption from piling work that is underway and are preparing for the new bridge under the railway to be put in place during the closure of the railway over Christmas.

We are currently looking at how we best work with the developer to minimise disruption to the village and also ensure that planning rules are effectively adhered to.

MERRY CHRISTMAS

Can I finish with a Merry Christmas wish to all, lets hope 2025 will be a great year for London Colney and our community.



A WORD FROM LONDON COLNEY PARISH COUNCIL CEO - JANE

In my first eight months as CEO of London Colney Parish Council, I have been deeply inspired by the incredible dedication and teamwork of the Parish Council team. Time and again, they have come together to deliver outstanding events that bring our village to life. It has been a privilege to be part of this journey so far, and I eagerly look forward to what 2025 holds for London Colney.

Over the years, as a resident, I have witnessed the village grow and adapt, reflecting the ever-changing nature of modern culture, and I am confident that this evolution will continue to enrich our community.

A heartfelt thank you goes out to the many volunteers whose efforts make London Colney such a wonderful place, and to the councillors who steadfastly uphold the Nolan principles in their service. Together, we are building something truly special.

London Colney is a village extending far beyond the fantastic events we host. Our parks and sports facilities are a constant hub of activity, providing spaces for recreation, fitness, and connection for all ages. We are also proud to have three versatile buildings available for lettings and community-led events, serving as valuable resources for local groups and residents.

Looking ahead to 2025, we are particularly excited about expanding the use of the Caledon Community Centre, aiming to open its doors even wider for more community-driven initiatives. These facilities, combined with the village's strong sense of community, make London Colney a thriving and inclusive place to live, work, and play.

I would like to wish you all the very best of the season and a happy new year.

JOIN US FOR SOME ART MINDFULNESS

Art Salad is a monthly art workshop that takes place at the Caledon Community Centre for older people and people with dementia.

Come along to meet the Art Salad team together with the members, and join in with our free art sessions in a safe, warm, friendly and fun setting for some art mindfulness, contentment and a good old-fashioned natter.

Art Salad is a completely not for profit organisation and our helpers are volunteers meaning that all donations to Art Salad go into running costs to keep this a free service for our members.

We also want to give a heartfelt thank you to our local sponsors for the coming year, Little Nightingales Nursery, Dream Team Movers Ltd and Enhanced Aesthetics. Your generosity means that we can continue our work and passion with our local community.

For more information:
Contact@samanthahurleyart.com
or 07900 827678 To DONATE:
www.crowdfunder.co.uk/p/lc-dementia-artworkshops



ART SALAD

FREE ART SESSIONS FOR OLDER PEOPLE

Painting and drawing can allow us to use imagination which can help older people and people living with dementia to feel connected to the people around them.

FREE Art workshop sessions at the **Caledon Community Centre** on the **second Wednesday** of every month between **10.30am and 12pm**.

Fun filled, creative sessions taking you back to your salad days.

Benefits are:

1. Increased brain stimulation
2. Improved memory
3. sense of achievement
4. Allows individuals to express their creativity
5. Boosts physical strength
6. Enhances mood and general wellbeing

Please email contact@samanthahurleyart.com if you would like more information or to take part. Art Salad is also available to visit residential homes so please contact us if this is of interest.

Huge thank you to our local sponsors, who have so generously supported Art Salad.

AN EPIC END TO 2024!

London Colney Rainbows, Brownies and Guides were delighted to be able to take part in two particularly important village events here in our beloved village.

The annual Fireworks Display and Remembrance Parade.

We were delighted that our Girl Guides were invited to help marshal along with the Parish Council at one of our favourite events, the Fireworks Display at Morris Way Playing Fields on Sunday 3rd November.

After many years of there not being a Guides Unit in London Colney, Guides were re-opened Summer Term 2024. Opening the opportunity for our girls between the ages of 10 and 14 years old to be able to help more complex tasks in our local community.

The Guides took on this new challenge with great enthusiasm.



We also had another first at an extremely important event in the Guiding annual calendar, Remembrance Parade. Our newly re-opened Guides Unit was able to join the Rainbows and Brownies for the parade this year.

All units displayed great respect and dignity during the whole occasion, notably for their age, especially as we have 4-year-old Rainbows as of this year. We look forward to meeting our

community during this special time of year and sharing what we do at our Rainbows, Brownies and Guides meetings and the opportunities Guiding brings to our girls and women.

We progress into 2025 with dynamism and vibrancy to build an ever stronger and exciting experience for our members of this great organisation. For more information **contact@samanthahurleyart.com**

REMEMBERANCE SUNDAY

Thank you to everyone involved in the Remembrance day Parade and Service. Thank you to John Andrews Photography for capturing these moments.



TAEKWON-DO

Get Fit & Learn Self-Defence

- * Opened 1994
- * Fully insured & Trusted
- * Multi award winning clubs
- * Classes by 3 time hall of famer
- * Classes by 8th Dan Master Coach

2 WEEKS FREE TRIAL
Beginners courses starting now
07960 476124

Only £30 a month
www.stalbanstaekwondo.com

30
years of success

Est. 1994
Hertfordshires multi award winning schools of Martial Arts

HEARTFELT Thank You's

An end of year thank you must go to Oliver & Akers Estate agents, The White Horse, and Lamps & Illuminations for sponsoring this years Christmas light switch on.



Thank you to MKM Builders for sponsoring our annual Firework event this year, to both London Colney & Colney Heath Guides and to Russell Turner photography

A huge Thank you to Little Nightingales Nursery for sponsoring our successful Halloween event where 60 children enjoyed a wonderful afternoon of entertainment from Linzis Music Group. Additional thank you's must also go to Willows farm, Wenzel's the Bakers & The St Albans balloon company for supporting the event.



Thank you to FOX's biscuits for supplying to xxx homes this year.

LONDON COLNEY PRIMARY & NURSERY SCHOOL

We are a happy and nurturing school and would welcome visits from prospective parents so they may find out more about the exciting learning culture that is created here. OFSTED inspectors so rightly said, "Something special is happening here". Pupils flourish at this friendly, inclusive school; they feel safe here.

They have warm, respectful relationships with each other and with the adults who help them. This is a thriving and diverse community where pupils are helped to overcome challenges and reach their full potential. Behaviour at the school is extremely positive.

If your child is rising five and was born between 1st September 2020 and 31st August 2021, now is the time to consider primary schools for

Reception class starting September 2025.

Applications are now open on the Herts County Council website to enable you to make your application. The last date for applying is 15th January 2025.

<https://www.hertfordshire.gov.uk/services/schools-and-education/school-admissions/primary-junior-and-middle-schools/primary-junior-and-middle-school-places.aspx>

If you are looking at schools in London Colney and did not manage to visit on our Open Day on November 29th, please do call the School Office and arrange to come and see our lovely little school 01727 823283.

The school is on its journey to becoming outstanding, so please do come and see for yourselves. We look forward to hearing from you soon.



Summerfield Health Centre and The Maltings Surgery

Do you need help with accessing the NHS App or Website using a personal computer or mobile device?

Computer Friendly can help, come and visit us at:

London Colney Community Centre



9 Caledon Rd, London Colney,
St Albans AL2 1PS
Thursday 9:30-11:30am

Marshalswick Baptist Church



Sherwood Ave, Marshalswick,
St Albans, AL4 9QL
Thursday 1:30-4:00pm

Healthy HUB, the Civic Centre



St Peter's Street, AL1 3JE
The 1st Wednesday of the month
9:30am-12:00

Ideally bring a photo ID such as Passport or UK Driving Licence, and your NHS Number.

It is not necessary to book and we can help on first come, first served basis.

We do not charge for this service, but any donations are welcome.

Computer Friendly

Computer Friendly is a non-profit organisation staffed with friendly and experienced unpaid volunteers



CHRISTMAS AT ST PETERS CHURCH

I have now been in post as vicar of St Peter's for 6 months and I now certainly feel part of the fabric of our church and our community. My wife and I love living in this diverse village and feel very much at home.

I'm continuing to meet new people every day, so do introduce yourself and say hello if you see me around the village, in the shops, in the pubs, or wherever I may pop up.

Much has been happening at St Peter's Church over the autumn, with new initiatives and maintaining our regular groups and services. It has been a joy to greet so many of you within our village who have stepped across our threshold to be part of all that we have to offer. Our free Baby and Toddler Group is thriving, and our monthly Children's Service is becoming popular with young families. Our monthly Taizé service brings a different approach to worship, and we are looking forward to the many different services we have planned for the build up to Christmas and beyond.

As the last of the leaves fall from the trees, we begin to turn towards our winter season in celebrating Christmas in the birth of Jesus Christ, and the new year ahead when our 200th anniversary celebrations begin. We can often believe that Christmas is introduced earlier each year, but my experience is that Christmas decorations, cards and more have always immediately replaced the pumpkins of Halloween on the shelves of our shops, leaving the season of Advent always struggling to make itself known.

On reading this, the Advent season will already be under way. Advent comes from the Latin word *adventus* meaning coming and is a season of preparation for celebrating Christmas, much like Lent is for Easter. Advent is also a penitent season where Christians look within themselves for guidance on how we are to be in meeting the Christ child and in understanding God's will for us in the world.

It is a season when Christians prepare to receive Jesus, yes in celebrating his birth, but also in Jesus coming into our lives now and in the future. However, it is always difficult and virtually impossible not to anticipate our Christmas celebrations before the big day. At St Peter's Church we have several events and services for all to attend in preparing for and in celebrating Christmas. Do take a look at our diary list.

What many may not be aware of is when Christmas is officially over. When do you take down your Christmas tree? The season of Epiphany, which celebrates the coming of the wise men, is part of the Christmas season. In fact, it is not unusual for many Churches to continue with their Christmas celebrations through until the beginning of February when Candlemas is celebrated, a time when all candles are blessed. If our 16-foot Christmas tree in our church lasts for that long, maybe we'll leave it up until then! All are welcome to

our services and events this Advent and Christmastide. However you may prepare for and celebrate Christmas, and the coming of the new year ahead, may I on behalf of my wife Dayna and all at St Peter's Church, wish you all a very Happy Christmas and a peaceful New Year. God Bless.

Rev Tom Smith



DATES FOR YOUR DIARY

DECEMBER

- 1st Advent Sunday – Children's Service 10am
- 7th Watford Brass Band Christmas Concert 7.30pm
For Tickets call 01727 568552
- 17th Baby and Toddler Christmas 9.30am
- 19th Carols on the Green at Riverside 6pm
With mince pies and mulled wine
- 22nd Nine Lessons and Carols 6pm in church
- 24th Christmas Eve – Children's Crib Service with
Christingle 4pm
- 24th Christmas Eve – Midnight Mass 11.30pm
- 25th Christmas Day – Parish Eucharist 10am

JANUARY

- 5th Epiphany Sunday – Children's Service 10am
- 7th Baby and Toddler Group – resumes 9.30am

FEBRUARY

- 2nd Candlemas – Children's Service 10am

And don't forget that our season of Lent begins on Ash Wednesday 5th March with services at 10am and 7.30pm in church.

REGULAR SERVICES

Sunday Services

- 8am Said Communion
- 10am Parish Eucharist
- 10am Children's Eucharist
- First Sunday of the Month
6pm Taizé Service
- Last Sunday of the month

Wednesday

- 10am Communion Service
followed by 'coffee pot'
- Tuesday, Wednesday, and

Thursday

- 9am Morning Prayer
- 5pm Evening Prayer

Regular Groups

- Baby and Toddler Group
9.30am-11.30am
Tuesday term time.

- Knit and Natter
2pm-4pm
Last Thursday each
month.

- St Peter's Book Club
2.30pm

- 3rd Wednesday each
month



STRONG ROOTS FOREST SCHOOL

THE LOCAL GEM OF AN OUTDOOR FOREST SCHOOL NURSERY HIDDEN IN THE GROUNDS OF THE ALL SAINTS CENTRE

As we approach the end of the year, with Halloween, Fireworks night and Diwali behind us, we now look forward to Christmas, Hanukkah and welcoming the New Year. 2025! A

them from having fun! They delight in seeing their breath in the air, something that we affectionately refer to a 'Dragon Breath'.

We love going for 'Frozen Walks' to try and find where Elsa has made ice

At 'Strong Roots' we teach the children to respect and have empathy for all living things. We actively look after the wildlife that visits our site. One of our favourite activities, is to make Pine cone feeders for the birds. This easy activity requires a Pine Cone (there are some lovely large cones around Napsbury) some lard, peanut butter, or suet (nut free and vegetarian options available). The children roll their cones in the chosen substance, then roll the coated cones in bird seed. These bird feeders hang in the trees and the birds and squirrels really appreciate the treat.

If you are considering our Ofsted graded 'Outstanding' Nursery for your child, please contact us on strongroots.forestschool@gmail.com to arrange a visit. Alternatively, you are very welcome to join our Parent a child group, £7.00 per child, on Tuesday's 9.30am - 11.30am, buggy friendly, everyone is welcome.



and sparkly frost. The children use all their senses on these walks, their enjoyment and learning are a pleasure to be a part of.

Here are two activities for you to try at home. When the temperature is predicted to drop overnight, fill up some balloons with water and add some food colouring. By morning you will uncover spectacular icy spheres, that are really colourful and can last for days.

quarter of a century since all of the parties of the Millennium. Time really does fly!

In the winter months, the children at 'Strong Roots Forest School' are dressed for the ski slopes, in their thermals, hats, gloves and insulated outer wear. The cold will not deter



FOR MORE INFORMATION

VISIT THE WEBSITE www.strongrootschildcare.co.uk

EMAIL US strongroots.forestschool@gmail.com

OR SCAN THE QR CODE

based in the grounds of All Saints, Shenley Lane, London Colney AL2 1AF



Scan me



“ We are a good school ”

London Colney Primary & Nursery School

Alexander Road, London Colney, Herts AL2 1JG

We believe that every child coming to our school is an individual and has something to offer. Our aim is to encourage, motivate and help all children reach their potential during the time they spend with us.

We now offer quality childcare before and after school from 7.30am – 6pm, for nursery through to Year 6, for children attending our school. The Laurels Club is run by London Colney Primary School staff and has wonderful facilities so that children feel happy, stimulated and safe.

If you would like to visit our lovely school and see for yourself what we have to offer, contact the School Office on 01727 823283 to arrange a visit. We look forward to seeing you!

We are a happy, caring, fully inclusive school with our children at the heart of all we do.



London Colney Primary & Nursery School

Headteacher: Sarah Joyce

www.londoncolneyherts.school.uk

1ST LONDON COLNEY SCCOUT GROUP

A BIG THANKS TO ALL OUR VOLUNTEERS

1st London Colney Scout Group has been in the heart of the village for over 100 years, providing a safe and exciting environment for young people to start their scouting journey, learning new life skills, taking part in adventurous expeditions, camps and activities, making new lifelong friends and having great fun at the same time.

None of this could happen if it was not for the leader volunteers and parent helpers who all give up their own time each week to put on and support the fantastic programmes that are delivered to our members.

Many of our leaders have been with the scout group for a number of years, often volunteering alongside their own children. Some following them up through group helping in different sections sharing the experiences as they go, other remain in the section they started off with and whilst enhancing their skills and knowledge from previous terms and pass them on to new members each year.

Are you up for the challenge?

We are always on the lookout for new volunteers, parents

with young ones wanting to join scouts, adults who were scouts in their own youth who want to give back to the community, passing on the skills and knowledge they learnt themselves, even young adults looking for life experience, motivation and help with personal development. If this sounds like you then why not come and take part in our four-week challenge.

What's the Four Week Challenge all about?

The Four Week Challenge is a gradual introduction to Scouts. New volunteers agree to help out for just four weeks, while a more experienced leader shows them the ropes and helps them get involved.

- Week 1: Come and see what we do.
- Week 2: Help out.
- Week 3: Get a little more involved.
- Week 4: Decide if volunteering at Scouts is for you.



For more information or to signup, please contact me: yetiburnetti@icloud.com



INTRODUCING suvera

AT SUMMERFIELD HEALTH CENTRE

Summerfield Health Centre is excited to be working with Suvera, a trusted digital health NHS Partner, to provide online clinics for long-term conditions.

WHY ARE WE MOVING ONLINE?

Moving long-term condition management online, we hope to improve your overall experience with our practice by:

- Reducing the time you have to wait for an appointment
- Providing you with easier access to clinicians when you need it
- Giving you a clear management plan much quicker

WHAT WILL YOU HAVE ACCESS TO?

You can access Suvera's patient secure patient portal as part of our online clinic. From here, you can submit information about your health from home.

GETTING YOUR INVITE

You'll receive a text message inviting you to use the online clinic and a link to the patient portal.

To access the patient portal, **log in using your full name and date of birth.**

SUBMITTING INFORMATION THROUGH THE PATIENT PORTAL

You'll be able to answer the health questionnaires through the patient portal and submit data like blood pressure if we need it.

When you share information about your health, a dedicated and specialised care team will review your data. They then provide clinical support all year round for your condition management.

Any information you share is safe and secure and won't be shared with anyone but your GP practice.



BOWMANSGREEN'S

Best bits



Autumn 1

We welcomed **new members of staff** to our team this year who are dedicated to ensuring the best outcomes for your children.

We held **Meet the Teacher** meetings to share with parents and carers information about their child's curriculum this year.

We launched our **new social media pages** on Instagram and Facebook to share all the exciting things taking place at Bowmansgreen every day. Our community is growing- with over 200 followers across both platforms- so please do join us!



@BOWMANSGREENPRIMARY



Facebook



We held our first **Inspiration Week** which involved lots of exciting activities for the children across the school, from a Shetland Pony visit in Reception, baking days in Year 1 and 3, amazing Art in Year 2, magic in Year 4 and BMX workshops in Years 5 and 6.

BMX Mike delivered what will go down as one of our most memorable assemblies. He demonstrated his tricks and flicks on and off the stage, with the help of two brave volunteers by the names of Mr Noakes and Ms. Crooks who formed part of a human ramp! We look forward to inviting BMX Mike back in the future.



At the beginning of October, we officially launched **Drumba!** Children (and staff!) loved igniting their inner drummer and we are looking forward to making this a weekly part of life at our school.



We introduced our **new Behaviour Curriculum** which has seen a noticeable improvement in behaviour across the school. Visitors to the school, including Mrs. Massey (our School Effectiveness Advisor), Learning Advisors, and external agencies who have worked with us for many years have all commented on the calmer and more settled atmosphere of the school.

We have introduced **Zones of Regulation** as a way to support children across the school to manage their emotions.

We introduced our **new English Curriculum** which has already had an impact on writing across the school. Children and teachers have loved immersing themselves in the new and exciting texts; letting their imaginations run free as budding authors! Miss Griffiths, our English Learning Advisor, has even shared your children's amazing work with her team at HfL Education and they have been very impressed!



Year 6 had the best time during their residential trip at **Manor Adventure**. They took part in a range of activities, from giant-paddleboarding and caving, to axe-throwing and canoeing to name but a few. We are sure memories that will last a life-time were made!

We elected this year's **House Captains** who are already carrying out their roles admirably. This year, we had an **Election Day** with polling stations and ballot papers for the community to cast their votes, practising one of the British Values of democracy.



Ms. Edwards highlight of the half-term was **Year 5's Harvest Festival** which brought the whole school community together for a special assembly.



We held our annual **Open Morning** where we invited prospective parents and carers to visit our school. We received lots of positive feedback about our school and look forward to welcoming new families in 2025. Mrs. Fleming has also started giving **tours** to the London Colney community to showcase the brilliant work we are doing here at Bowmansgreen.

We have begun to introduce **Sign Language** as a part of life at Bowmansgreen. Each week, Miss Allen teaches the school the **Sign of the Week** and it has been amazing to see children using it in their day-to-day lives at school.



The school community came together to recognise **Young Mind's Hello Yellow** campaign.

This week, we held our first **Family Consultations** of the year and opened the classrooms for parents and carers to see their children's learning environment and look in their books. We hope you enjoyed the insight into your child's life at school.

We introduced our **new Home Learning Policy**, following feedback from parents and carers. We have had lots of positive feedback about the new online platforms and how the new expectations are helping families to enjoy valuable time together after school and at the weekends.

We elected our new **Pupil Parliament** who will work with Mr Garwood this year to make Bowmansgreen the best school it can be!

THAT'S A FOUL MESS

WHY PICKING UP AFTER YOUR DOG MATTERS

Let's face it—picking up dog poop isn't the most glamorous chore. It's messy, inconvenient, and easy to overlook. But this small act of responsibility has a surprisingly big impact on the environment, public health, and community well-being. Here's why it's essential to always clean up after your pup and some tips to make the process a little easier.



PROTECTING HEALTH: PETS, WILDLIFE, AND HUMANS

1. Safeguarding Our Pets

Dog faeces can carry harmful bacteria and parasites like *E. coli*, *Salmonella*, and roundworms (*Toxocara canis*), which can survive for months in the environment. These pathogens pose risks not only to other dogs but to your own if they come into contact with

contaminated areas. This can lead to infections, illness, and costly vet visits.

2. Preserving Wildlife

Left unchecked, dog waste can disrupt local ecosystems. It introduces pathogens that can spread diseases to wildlife and excess nutrients that promote the growth of harmful algae, damaging aquatic ecosystems and reducing biodiversity.

3. Protecting Human Health

Dog waste isn't just gross; it's a potential health hazard. Parasites like *Toxocara canis* can infect humans, especially children, through accidental contact, causing symptoms ranging from mild discomfort to serious health complications, including vision loss.

ENVIRONMENTAL IMPACTS

Contrary to popular belief, dog poop isn't a natural fertilizer. Unlike composted manure, dog faeces is highly acidic due to their diet and can kill grass rather than nourish it. Additionally, when left behind, it can wash into waterways, polluting rivers and lakes with harmful bacteria and excess nutrients that disrupt aquatic ecosystems.

In urban areas, where the density of dogs far exceeds the natural carrying capacity of the ecosystem, the environmental strain is compounded. Picking up after your dog helps to minimize these negative effects.

FOSTERING A HEALTHY COMMUNITY

It's About Courtesy and Responsibility

Nobody likes stepping in dog waste or enduring the smell of a poorly maintained lawn. Cleaning up after your dog not only prevents these issues but also fosters a sense of respect among neighbours and park-goers.

BUILDING A COMMUNITY MINDSET

A clean and safe community starts with everyone doing their part. By picking up after our dogs, we demonstrate a collective commitment to public health, environmental protection, and the well-being of our neighbourhoods.

TIPS FOR CLEANING UP DOG WASTE

- **Use Biodegradable Bags:** Eco-friendly baggies are widely available and reduce the environmental impact of disposal.
- **Flush When Possible:** For at-home cleanups, consider flushing the waste (without the bag) to keep it out of landfills.
- **Tackle Messy Situations:** Use tools like clumping cat litter or freeze sprays for easier cleanup of loose stool.
- **Disinfect the Area:** A pet-safe disinfectant can kill residual bacteria and keep your lawn healthy.

The bottom line is that picking up after your dog is more than just a courtesy - it's an essential step in protecting our environment, health, and shared spaces. While it may be an unpleasant task, its benefits far outweigh the minor inconvenience.

Be a responsible pet owner and community member - your efforts make a world of difference.

This article has been endorsed and supported by Summerfield Medical Practice, Jooii Veterinary Practice, and the London Colney Parish Council Grounds Team and Litter Picking Team, who all too often must deal with the disappointing and increasing trend of unpicked dog waste. The Parish Council works tirelessly to maintain community spaces, including preparing pitches for children's and adult football and cricket matches. Let's do our part to ensure these spaces remain safe and welcoming for everyone to enjoy.

Jooii Vets on Haseldine Road are offering their own handy Poo bag dispenser - all you need to do is pop into the vet practice and quote 'REF - THAT'S A FOUL MESS!' to claim their FREE 'Jooii' dog poo bag dispenser!





WALSINGHAM WAY REWILDING PROJECT

The Walsingham Way Rewilding Project continues to thrive as we celebrate the progress made in its second phase. With new features and community engagement, this initiative is shaping up to be a true haven for biodiversity and a meaningful space for everyone to enjoy.

New Features to Promote Wildlife

- Building on the success of Phase One, we are soon to be:
- **Planting Wildflower Seeds:** Wildflower seeds will be sown around the edges of the rewilded area. These blooms will support pollinators like bees and butterflies, creating a beautiful and functional space for wildlife.
 - **Creating a Garden Pond:** A 350-litre garden pond is being installed to provide a vital habitat for amphibians, insects, and birds, significantly enhancing the ecological value of the rewilded space.

Replacing and Enhancing Our Tree Cover

- To ensure the long-term success of the rewilding effort, we are addressing gaps in tree cover:
- **Saplings from "Your Tree, Our Future":** We're replacing trees that haven't taken root with saplings provided through the County Council's Your Tree, Our Future initiative. These new trees will help combat climate change, improve air quality, and enrich local ecosystems.
 - **Community Donations:** Our heartfelt thanks go to local resident Michael Kennard, who has generously donated juvenile trees. His contribution adds to the diversity of species and exemplifies the community spirit that fuels this project.

A Space to Inspire Curiosity and Learning

- The Walsingham Way rewilded area is not just a sanctuary for wildlife—it's also a space for people to reconnect with nature. Designed as a resource for all ages, it will offer:
- **Educational Opportunities:** Features like the wildflower borders, new trees, and garden pond create a dynamic learning environment where visitors can explore local ecosystems.
 - **Community Connection:** The rewilded area will serve as a space to inspire future generations, fostering a deeper appreciation for biodiversity and conservation.

Volunteer Power

This project's success is a shining example of what can be achieved through community action. Volunteers have played an essential role in tasks such as sowing seeds, planting trees, and preparing the garden pond. Their dedication continues to be the backbone of this initiative. Looking ahead, we encourage even more residents to join us in nurturing this space and supporting other rewilding efforts across the community. Whether it's planting trees, maintaining habitats, or organizing activities, there are countless ways to make a difference.

Looking Ahead

With a combination of diverse features and strong

community involvement, the Walsingham Way Rewilding Project is set to become a thriving hub for both wildlife and people. It stands as a testament to what can be achieved when communities come together to prioritize nature and sustainability.

We extend our gratitude to Countryside Management Services, who have supported, facilitated, and part-funded the project, helping us make this vision a reality.

Get Involved!

For more information about the Walsingham Way Rewilding Project and to stay updated on future events, join the Friends of Walsingham Way WhatsApp group by scanning the QR code below.

Together, we are rewilding Walsingham Way and fostering connections with nature for generations to come.



Friends of Walsingham Way
WhatsApp group








Nursery



Here at London Colney Primary & Nursery School, we believe in children having the strongest start to their education as possible and place a strong emphasis on our Early Years Foundation Stage. Our EYFS is made up of our Nursery and Reception class and is taught and led by teachers and staff who know each and every child in their care.

If you are looking for a Nursery that has a fantastic ethos with an excellent transition into Primary School. Please come and see for yourself what our lovely School has to offer. Please contact the School office on 01727 823 283 should you wish to make an appointment.



We are a happy, caring, fully inclusive school with our children at the heart of all we do.

London Colney Primary & Nursery School
Headteacher: Sarah Joyce www.londoncolney.herts.sch.uk



FINAL PREPARATIONS UNDERWAY FOR 2025

LOWBELL LAKE PROJECT UPDATE



The Lowbell Lake project is nearing its completion, marking a significant milestone in our ongoing effort to improve river health and enhance biodiversity. Over the past several months, the project has evolved significantly, guided by collaborative meetings with key stakeholders including the Environment Agency, Highways, Herts County Council, Thames Water, Affinity Water, The River Ver Society, Countryside Management Services, ColneCAN, Barnet Angling Club, and the local bailiff. Limited public consultations have also played a vital role in shaping the project from a local knowledge perspective.

Since my appointment to the parish council, in the last eighteen months there has been a marked significant growth, in areas such as biodiversity education, Carbon Literacy, water testing, and active participation in seminars and conferences. This journey has also involved submitting multiple grant applications and refining our contacts and reporting processes. As a result, the project has evolved from a focus on aesthetics to a comprehensive overhaul, driving improvements in biodiversity, river health, and habitat creation and support.

In order to maximize the impact, we've integrated additional "bolt-on" projects, creating further opportunities through creative funding streams. With all plans now nearly finalised, we are ready to begin work in early 2025, with the aim of completing all related tasks by the end of the year.

KEY FEATURES OF THE PROJECT:

- **Wildflower Seeded Bank:** On the left-hand side of the bridge, as seen from the Green Dragon, a wildflower bank has been planted as an ancillary project to complement and support the main Lowbell Lake initiative. This wildflower bank will serve as a vital wildlife corridor, connecting the lake area to the nature reserve. It will not only provide essential habitat for pollinators like bees and butterflies but will also foster the growth of other local species. The bank enhances the ecological connectivity of the area, offering a valuable link for wildlife between the lake and the reserve, enriching the overall biodiversity.
- **Nature Reserve Corridor:** Building on the wildflower bank, the creation of a cordoned-off area that will eventually become a fully-fledged nature reserve is set to begin in autumn 2025. This project, which dovetails with the main initiative, will provide a protected haven for local wildlife. By safeguarding this area, we aim to improve biodiversity and create a quiet space where nature can flourish undisturbed, further enhancing the ecological value of the entire Lowbell Lake area.
- **Funding and Partnership:** The primary Lowbell Lake project is supported by a ring-fenced grant of £25,000, awarded by Tarmac five years ago. A condition of this funding is the contribution of 10% from a third-party partner, which is being generously provided by Barnet



Angling Club. Their partnership is integral to the success of this project and exemplifies the community collaboration that is central to its implementation.

Additional Features (not exhaustive):

- Installation of safety life rings with location points (including what 3 words)
- Overhaul of bins and dog waste bag dispensers
- Comprehensive water testing for regular monitoring
- Enhancing the footpath that surrounds the lake
- Marginal planting to increase biodiversity
- Tree removal from the water edges and reed planting for water filtration
- Repairs to foot bridges and painting bollards and railings
- Updating signage around the lake for better information and awareness

We are seeking assistance and expertise, as well as support from working parties, to complement the efforts of the River Ver Society and Barnet Angling Club in the delivery of the finalised Lowbell Lake project plan. Their valuable input, alongside contributions from local volunteers and community members, will play a crucial role in ensuring the project's success. Together, we aim to enhance the ecological integrity of the area and create a thriving space for wildlife, ensuring the long-term sustainability of the project. We look forward to collaborating with dedicated individuals and organisations who share our commitment to improving biodiversity and supporting our local environment.

These efforts, once completed, will significantly improve the health of the lake and surrounding ecosystem, benefiting both wildlife and the local community. The full plan for the project will be shared in the next magazine edition, so stay tuned for more details as we move closer to the launch of this exciting initiative in 2025!

Thanks at this stage must go to John Pritchard (River Ver Society), Tony Booker (ColneCAN), and Andrew Taylor from Countryside Management Services. They have been instrumental in the success of various environmental schemes and projects within the local and wider area, whereas is the case with rivers, everything is interconnected and knows no boundaries. Their generosity in offering both time and expertise has been critical in laying the foundations for meaningful interventions that will have a lasting positive impact on our environment. Their support and encouragement continue to be invaluable as we work together toward a more sustainable future.

COMMITTED TO CLEAN STREETS COME RAIN OR SHINE

The London Colney Litter Pickers are out in full force, braving all weather conditions to tackle the growing waste problem in our community. Their dedicated efforts have seen them collect overwhelming amounts of rubbish and recycling as they go, ensuring that both waste and recyclables are responsibly sorted and disposed of.



Working closely with Veolia, who promptly collect the rubbish and recycling we gather, the Litter Pickers are making a real difference in keeping our streets clean.

Additionally, any fly-tipping incidents are reported, and Veolia investigates these promptly, ensuring that those responsible are held accountable.

In addition, the London Colney Guides have been out all over the village, lending a helping hand in clearing excess litter, especially after the well-attended fireworks display at Morris Way Playing Fields. Their commitment to keeping the community tidy during such busy events shows the true spirit of volunteerism in our village.

To help deter fly-tipping, covert cameras have been placed in key locations. It's clear that "Big Brother" — or at least St Albans District Council, London Colney Parish Council, the police, and the litter picking community — are keeping a watchful eye. With full backing from local authorities, the message is clear: fly-tippers beware, as the authorities



have taken and are ready to take robust action, recouping thousands of pounds in fines. We are pleased to report that one of the largest fly-tips



in the district, involving an articulated lorry trailer, was identified on the Riverside Estate by Lowbell Lake. Thanks to the diligent efforts of the community, this serious incident has been brought to light and the waste has now been cleared.

St Albans District Council (SADC) is actively pursuing a prosecution, ensuring that those responsible for this illegal dumping are held accountable. This reinforces the community's commitment to maintaining a cleaner, safer environment and highlights the importance of continued vigilance in reporting fly-tipping.



Scan if you would like to join the London Colney Parish Council Litter Picking WhatsApp Group:

London Colney Litter Pickers
WhatsApp group

Scan or upload this QR code using the WhatsApp camera to join this group.

A huge thank you to the active and dedicated volunteers, including the Guides, who selflessly offer their time and efforts to make London Colney a cleaner, safer, and more sustainable place for everyone!

If you would like to join in this surprisingly fun and rewarding activity, scan the QR code to get involved.



SUSTAINABLE ST.ALBANS

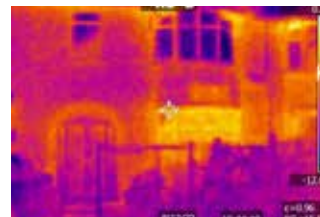
Have you noticed how many solar panels are going up around London Colney? Those panels are making electricity from sunlight which the owners use to power appliances in the house and sell the surplus back to their energy supplier which reduces their bills.

We're all watching our fuel bills at the moment and wondering - Where is all that money and the heat it produced going? Most of the money goes in heating water for baths, showers, washing machines, dishwashers and to heat the water in the radiators that heat our houses. Hot water pours down our drains as we wash clothes, dishes and ourselves so we know where that's going.

What about the water we use to heat our house? It's recycled endlessly round our radiators, reheated constantly in winter by the boiler after it has released its heat into the house. The question is what's happening to that heat? Where does it go? Why are we watching TV under a blankie and scurrying off up the stairs once the heating goes off at 10?

You can get some idea of where the heat is going from this picture, taken with a Thermal Imaging Camera. It shows the outside of a typical semi on a cold winter night. Thermal imaging cameras use heat instead of light to take a picture. They compare amounts of heat coming from an object and use the colours yellow (hottest), orange/red (not so hot) and

purple to black for the coldest parts of the picture. Heat is escaping from this house through the downstairs bay window at the front and round the front door. The upstairs front rooms were not heated when this picture was taken but you can see that heat which has risen through the house is escaping from under the eaves.



You can use a thermal imaging camera inside your house as well as out. Cold spots inside show where heat is going in winter; perhaps round windows and doors. Gaps in your roof insulation will show as cold patches in the upstairs ceilings. You can use the information to help you decide on the best ways to stop that heat getting out.

Thermal imaging cameras are expensive to buy but you can borrow one for free from Sustainable St Albans. You will have to leave a deposit in the form of a cheque and do a short online course to show you how to use it. The thermal imaging camera will be in London Colney for most of January so you won't even have to cross the roundabout to get hold of it.

Contact Julian Gannon by email at julian.gannon@sustainablestalbans.org to discuss booking the camera. You can also find out more here



LITTLE NIGHTINGALES DAY NURSERY BARNET ROAD

The Day Nursery is open 51 weeks of the year from 7:30am - 6:30pm and caters for ages from 3 months to 5 years. Our homemade meals are included in the price. We now offer funded places from 9 months old.



LITTLE NIGHTINGALES PRESCHOOL ALEXANDER ROAD

Term time only, open 9am - 3pm, this Preschool consists of a larger, open plan space leading off to our wide range of facilities. With free flow access to our outdoor classroom and a large garden that is used all year round. We now offer funded places from 9 months old.

NAPSURY'S WATER STATION: WHERE HYDRATION GETS ON TRACK!

Exciting News: A New Outdoor Drinking Water Fountain for Napsbury Pavilion!
London Colney Parish Council is delighted to announce that we've acquired an outdoor drinking water fountain—at no cost! This fantastic new addition will be installed outside Napsbury Pavilion, hopefully in time for Christmas, bringing numerous benefits to our community.

Health and Wellbeing

Access to free, clean drinking water encourages healthier habits for everyone. Staying hydrated is essential for energy, concentration, and overall health, and having a convenient water source means you can easily top up whether you're out for a walk, enjoying sports, or spending time at the park.

Supporting Dog Walkers

For dog owners, the fountain will also allow for easy refilling of dog water bottles, ensuring your furry friends stay hydrated during their adventures. It's a small but impactful way



to enhance the experience of our beloved canine companions.

Environmental Impact

This fountain promotes sustainability by reducing the need for single-use plastic bottles. By refilling your reusable bottle at the fountain, you're helping to cut down on plastic waste and protect the environment—a step in the right direction for a greener, cleaner community.

Convenient and Accessible

The fountain will be located at Napsbury Pavilion, making it easily accessible to everyone who uses the nearby facilities or simply enjoys the surrounding outdoor space. Keep an eye out for signs once it's installed to guide you to this new community resource.

We're thrilled to provide this practical and eco-friendly amenity to the community, and we hope it becomes a well-used and appreciated feature of Napsbury Pavilion. Let's raise a bottle to health, sustainability,



APPLEONIA
BEAUTY STUDIO

Paraffin Wax
Hand Treatment
£50

**DRY SKIN REMOVAL
WITH NAIL TIDY***

A little T.L.C for your hands this winter ... Paraffin wax is a soft wax that can provide therapeutic heat therapy for the hands.

This also has softening and moisturising effects on the skin. A great treatment for Arthritis.

**WHY NOT TREAT YOURSELF TO
NAIL COLOUR FOR +£10*

OFFER AVAILABLE UNTIL END OF JANUARY

📞 01727 825 258 | 07449 773 297

🌐 WWW.APPLEONIA.CO.UK

🏠 UNISEX SALON 9 HIGH STREET,
LONDON COLNEY ST ALBANS, AL2 1RE



SAVE THE DATE :: SAVE THE DATE ::
August
9th
2025

for the

London Colney Village Day

Will be coming to London Colney
at the Morris way playing fields
White Horse Lane
more details to come in the New Year!



SCAN
to find
out more



LOCAL HISTORY SOCIETY

EXHIBITION 2024

In October the annual two day exhibition of the London Colney Local History Society was held at the Caledon Community Centre with the theme "The Inns & Alehouses of London Colney".

Well attended, the exhibition was also visited by local MP, Daisy Cooper who was presented with a framed print of a painting by the late David Ansell, founder member and first chairman of the Society. Work on next year's exhibition has already started!



HATE GYMS? LOVE GYMOPHOBICS!



Focusing on ladies over 40!

Amazing results

Tailored support

Drop a dress size in weeks

No men, no mirrors, no lycra

Fun & friendly

All sizes & fitness levels

Improve your overall health

Improve strength, mobility & flexibility

Eases menopause symptoms

Our female-only environment creates a safe haven for women and our highly-trained instructors guide ladies every step of the way. Members receive a personalised programme specifically built around individual needs and regular 1-2-1 reviews keep members on track.

You don't hear clanking weights or whirring treadmills in our centre. Our Instructors are also trained to provide nutritional advice.

We aren't just a gym, we are a whole lifestyle package revolutionising women's health and fitness.

LADIES ONLY - 30 MINUTE WORKOUT

01707 707710

Rear of the Hatfield Tap, Bishops Rise, Hatfield, AL10 9BZ
Hatfieldgymphobics.co.uk [GymphobicsHatfield](https://www.facebook.com/GymphobicsHatfield)



Collect 10 stamps and receive a

£50 FUEL VOUCHER*



PICK UP A CARD TODAY!

Ask a member of the team for more details.

MKM are your local Builders Merchant complete with a Plumbing and heating department and kitchen and bathroom showroom. We welcome trade & retail customers and our spend incentives apply to all.

London Colney Bypass **London Colney** 01727 324000 **AL2 1HG**

MKM

mkm.com



HIGH SHERIFF VISITS DOODLEBUGS

High Sheriff Visits Doodlebugs Arts & Crafts!

We were honoured to welcome the High Sheriff of Hertfordshire to Doodlebugs Arts & Crafts, where we had the opportunity to showcase our work and vision.

The Sheriff's visit was both inspiring and energizing, underscoring our shared commitment to supporting young people in Hertfordshire. We look forward to welcoming her back as we continue to grow.

Doodlebugs is a Creative Hub for Kids All Year Round

Doodlebugs Arts & Crafts is a nurturing, community-centered programme for children aged 4-11 in London Colney. Our creative club brings together young people from diverse backgrounds, including state and private schools as well as home-educated children, providing a safe space where they can unwind, make friends, and explore their creativity.

Located conveniently on Kings Road, London Colney, Doodlebugs runs after-school sessions with a "walking bus" from local schools or direct drop-off at our hall from 3:30 pm. Each session includes creative activities, a healthy snack, and a calm, welcoming atmosphere with small group sizes.

We are proud to integrate traditional needlecraft skills into our sessions, introducing children to the timeless arts of embroidery, knitting, and sewing. These hands-on skills nurture patience, focus, and fine motor development, blending traditional crafts with modern creativity.



Doodlebugs is also a popular holiday club, offering engaging arts and crafts sessions during school holidays. Parents can count on Doodlebugs to provide a fun, safe, and stimulating environment for their children year-round, where young minds can thrive both creatively and socially.



Connection & Creation through generations

Doodlebugs

Arts - Crafts - Wellness

Minibugs

Mother and Toddler Club

Wednesdays & Fridays
Term-time only
9.30-10.30am
£4.00 per child
Tea coffee biscuits
and plenty of creativity!

London Colney Baptist Church Hall
Kings Road, London Colney,
St Albans AL2 1EN

Call us: 07706 549391
Email us: info@doodlebugsartsandcrafts.co.uk
Visit our website:
www.doodlebugsartsandcrafts.co.uk



**GAS HEATING &
PLUMBING SOLUTIONS**

Experienced & Qualified Local Plumbers and Gas Engineers

01727 821 704 | WWW.GHPS.UK

OUR SERVICES:

Plumbing | Heaters, Boilers, Repairs & Maintenance | Boiler Services | Landlord, Gas Safe Certificates & Legionnaires | Gas Appliances | Bathroom and Kitchen | Power Flushing | Air Conditioning | Emergencies



**GUTTER CLEANING &
DRAINAGE SOLUTIONS**

In association with Gas Heating & Plumbing Solutions

- Drain jetting
- Drain Unblocking
- Drain Relining
- CCTV surveys
- State of the art gutter cleaning
- Using Skyvac system
- Reaches upto 50 feet with no ladders
- Domestic and commercial

In association with GHPS  **GAS HEATING &
PLUMBING SOLUTIONS**
Trading for 13 years with over 1,500 reviews at
WWW.TRUSTATRADER.COM



TEL: 01727 821704

A VERY ACTIVE AUTUMN AT THE DE HAVILLAND AIRCRAFT MUSEUM



Several of the museum's buildings now appear in their wartime livery thanks to the generosity of Dulux paint and its Community Engagement Programme. Dulux technicians researched camouflage colours and accurately reproduced these. Twenty staff worked for two days to complete the project.

Our Macmillan coffee morning raised a new record of over £700 and was well supported by the public and museum volunteers. One volunteer in particular deserves rather more



than a cup of coffee and a slice of Dundee cake. Ian Thirsk, the Museum's Acting Head of Collections, received a Lifetime Award by Aviation Heritage UK.

Ian has been volunteering at the de Havilland Aircraft Museum for well over 40 years and is a leading authority on the Mosquito. He has been actively involved in the Museum's restoration of the Mosquito prototype and two production models, as well as supporting other surviving examples worldwide.



October 20 marked the 90th anniversary of the MacRobertson Air Race from England to Melbourne in Australia. It was won by a twin engine dH88 Comet; the Museum's replica features considerable material about the aircraft and the race. A model of a dH88, recently restored by the museum, is displayed in the forecourt of the Comet Hotel in Hatfield. September was the 80th anniversary of the ill-fated Operation Market Garden.

The Horsa Glider was widely used to deliver troops to the Arnhem Bridge. Our exhibit has seen significant renovation recently and the display was supplemented by the temporary loan of a wartime Jeep by the Shuttleworth Collection. About several hundred Jeeps were used in the operation, the majority delivered by Horsa gliders.

The Horsa was designed and developed in secret on the site of the Museum and over 500 of them ended their operational lives in the Battle of Arnhem. In November Peter Hendriks from Arnhem was invited to the Museum. His lifetime project has been the recovery and display of material from the Arnhem landings in a dedicated museum.

v

Whatever the weather forecast, the Museum is confident of having a 'white' Christmas. Many volunteers are donning overalls and wielding brushes and rollers to redecorate the reception, aeroshop and cafeteria in white during the Christmas closure, Monday 16 to Wednesday 25 December. We reopen to visitors on Boxing Day at 10:30 with not a single a mince pie, turkey sandwich and satsuma in sight.

Located between London Colney and South Mimms on the B556, the museum is open every day, except Mondays, from 10:30. There is plenty to appeal to enthusiasts, families and special interest groups. As well as artifacts and materials to handle, there are equipment demonstrations, talks and rare film clips and newsreels. With a café, aeroshop, children's play area and special activities during the school holidays, it is clearly 'much more than a museum'.



Find out more by visiting our website,
www.dehavillandmuseum.co.uk



A FAMILY FUN DAY OUT



BOOK ONLINE IN ADVANCE AND SAVE AT
WILLOWSACTIVITYFARM.COM

St Albans, J22-M25 

A COMMUNITY HUB WELCOMING ALL

LONDON COLNEY LIBRARY



This past summer, our library hosted the fantastic Marvelous Makers Summer Reading Challenge that brought the community together in the spirit of reading and learning. The event was a tremendous success, with our young participants diving into a world of stories and arty adventures.

We are thrilled to announce that following this event, many new volunteers have joined our friendly team. Their enthusiasm and dedication are invaluable, and we are grateful for their support in making our library a vibrant community space.



As the winter months approach, we look forward to welcoming our borrowers back to the library. Whether you're seeking a cosy novel to curl up with, digital and online access, or a place to connect with others, London Colney Community Library is here for you. Our volunteers

Providing
home care,
support and
companionship

—
**01582
764305**



Call us to discuss the range of specifically tailored services we can provide for you or an elderly loved one.

www.nannies4grannies.co.uk





ANDY'S
DRIVING SCHOOL

Learn how to drive with a professional fully certified instructor.

Manual & Automatic Available

Herts Based

Get in Touch:
Andy 07570 257118

BOOK YOUR FIRST
6 HOURS FOR
£174

LONDON COLNEY W.I. (WOMEN'S INSTITUTE)

London Colney W.I. (Women's Institute) would like to wish you all a Very Happy New Year.

2025 will be crammed with good speakers on a variety of subjects and we would be delighted to welcome you to join us. However, on;

Tuesday, 14th January 7:30pm

'Knowing Me, Knowing You' sounds baffling but if you come along, all will become clear.

Tuesday, 11th February 7:30pm

'Valentine's Heart Art' with Ellen. We are having a craft evening and they are always fun.

Tuesday, 11th March 7:30pm

Gill Hodgekinson-Price will be telling us of the Secrets of the massive and creepy Highgate Cemetery.

We can be found on the second Tuesday of the month, 7.30 p.m. in the Community Centre, London Colney. We have refreshments and a raffle and you can come as a visitor for the first time for just £5. If you join, the annual membership is £48. Please email: londoncolneywi@gmail.com if you would like more information on becoming a member.






PLANT & TOOL HIRE

Over 30 years of industry experience!

FREE DELIVERY AND COLLECTION in St Albans

Follow Us
@centraltoohireltd



01727 846999 | info@central-tool-hire.co.uk | www.central-tool-hire.co.uk
UNIT C11A, THE ALBERT BYGRAVE RETAIL PARK, NORTH ORBITAL ROAD, ST ALBANS, AL2 1DL

A BIG THANK YOU TO OUR LOCAL COMMUNITY



All the team here at London Colney just wanted to say a huge thank you to everyone in the local community that has engaged with us and supported us it has been a tough year to start a business but we have been warmly received by local businesses and customers retail and Trade.

We have had a lot of fun supporting local events, schools and clubs we sponsor the ladies football team at Colney Heath 24 - 25 will be our second year with them and from a huge amount of disruption in September 23 they have won a league and been promoted to the Eastern Region in which they are doing extremely well. We sponsored the London Colney Fireworks display and a few school events.

We have a couple of your men working for us a few hours a week one 16 who is at College and one who is 14 they are a much welcomed support and are learning new skills and supporting us with our important jobs that do not always get done when they need to please watch out for our facebook and Instagram post for events special offers and just a bit of good clean fun.



Find us on

 MKM_LondonColney  MKM (London Colney)

Visit the website
www.mkm.com

RJW
ELECTRICAL SOLUTIONS
LTD

07999 488 566
info@rjwelectricalsolutionsltd.co.uk
www.rjwelectricalsolutionsltd.co.uk

APPROVED BY

Checkatrade.com Which? EIC APPROVED CONTRACTOR

Healthy hub
St Albans District

Our overall vision is for a healthy and well city and district where everyone lives a fulfilling and healthy life

wellbeing advice support health

There are lots of local organisations and sources of support if you need help with any aspect of your health and well-being.

Scan the QR code for further information.

Citizens advice St Albans District St Albans City & District Council

WHO DO I CALL?

GRASS VERGES, POT HOLES, STREET LIGHTS?

Herts County Council

www.hertfordshire.gov.uk

T: 0300 123 4040



FLY TIPPING / RUBBISH BINS



St Albans District Council

a.cleanerdistrict@stalbans.gov.uk

T: 01727 809019

PARKING ISSUES



St Albans District Council

T: 01727 845 283

CITIZENS ADVICE



T: 01727 811 118

W: www.castad.org

Keep More Money

Need advice to help reduce your bills?

We're offering 1:1 energy and utilities advice. We give advice on energy costs, fixing and/or switching suppliers, payments and grants, energy efficiency tips and the priority register. We can also help with budgeting and debt advice. If you're struggling with the cost of living get in touch.

Call 01727 811118 Mon to Thurs 10am-4pm; Fri 10am-1pm. Or find us at the Foodbank @Caledon Community Centre on Fridays 10am-12noon



citizens advice St Albans District

Registered charity number: 1041830

MINIMIZE

CREATIVE SOLUTIONS

GRAPHIC DESIGNER - PHOTOGRAPHY - MARKETING

GET IN TOUCH WITH MINY TODAY
FOR YOUR DESIGN NEEDS

T: 07808 832 285 E: minimize@live.com

London Colney Community Library

Your local library needs

YOU!

Would you like to join a team of
volunteers helping library
customers?

**For further information about how
you can get involved, please contact:**

libraries.communityservices@hertfordshire.gov.uk

Our current opening hours are:

Monday 1.00pm - 5.00pm

Tuesday 1.00pm - 5.00pm

Thursday 1.00pm - 5.00pm

Saturday 9.30am - 1.30pm



www.hertfordshire.gov.uk/libraries



Ken Hodson

Local Computer Hardware and Software Repairs,
Upgrades and Advice for Home and Business

Tel. 07974 156743 / 01582 794723

Email enquiries@kenhodsoncomputerservices.co.uk

www.kenhodsoncomputerservices.co.uk

- No fix, no fee for all repairs – you have nothing to lose.
- Low hourly rate.
- Most repairs carried out in your home, if not the computer will be picked up from and delivered back to you.
- Problems with Windows / Applications / Internet / networks fixed.
- Friendly training and instruction available in plain English
- Advice given on upgrades – many older computers can be upgraded at a fraction of the cost of a new machine.
- Upgrades of hardware and software carried out.



DATES FOR THE Diary



WEEKLY EVENTS IN THE COMMUNITY

WOULD YOU LIKE TO SHARE YOUR GROUP OR ACTIVITY ON OUR WEBSITE?

FOLLOW US AND KEEP UP TO DATE WITH WHAT IS HAPPENING IN LONDON COLNEY

FACEBOOK: [@londoncolneyparish](#)
VISIT: www.londoncolney-pc.gov.uk

WOULD YOU LIKE TO SHARE YOUR GROUP OR ACTIVITY ON OUR WEBSITE?

Please send us – a link to your website, your logo and image (optional) and information about your group/sport or activity such as when you meet, who it is aimed at, is there a cost, contact details, what you do.

Email us at events@londoncolney-pc.gov.uk

CHANTRY ISLAND
Wednesday 18th June

LONDON COLNEY VILLAGE DAY
Saturday August 9th

LONDON COLNEY PRIDE
Saturday August 30th

HALLOWEEN CHILDREN'S PARTY
Sunday October 26th

FIREWORKS
Sunday November 2nd

REMEMBRANCE PARADE & SERVICES
Sunday November 9th

CHRISTMAS LIGHT SWITCH ON
Sunday November 30th

MONDAY

SEATED EXERCISE

10am - 11am

Caledon Community Centre

T: 01727 821314

SEATED YOGA AND

RELAXATION

11am - 12noon

Caledon Community Centre

T: 01727 821314

LINZIE'S MUSIC GROUP

10am - 10:45am

Napsbury Pavilion

Term Time

T: 07956 857589

London Colney Library

1pm - 5pm

TAE KWON DO

4pm Caledon Community Centre

T: Chris Snow - 07960 476124

KIDS @THE BASE

4:30 - 6pm

RETURNING SEPTEMBER

Caledon Community Centre

T: Shelley -0797 3466572

IRISH DANCING

6.30pm

Caledon Community Centre

T: Kathleen - 07702 232464

MONDAY

PILATES

6:45pm - 9pm

Morris Way Pavilion

T: Joanna - 07740 930263

FOOT HEALTH CLINIC

First Monday of the Month

Morris Way Pavilion

T: Sandra Gray - 07580572349

TUESDAY

LINZIE'S MUSIC GROUP

10am - 10:45am

Napsbury Pavilion Term Time

T: 07956 857589

LUNCH CLUB

12 noon

Caledon Community Centre

T: 01727 821314

LONDON COLNEY LIBRARY

1pm - 5pm

Caledon Community Centre

OVER 60'S BINGO

1:30pm - 4pm

Caledon Community Centre

T: June 01727 823666

T: Jean 01727 823325

TUESDAY

IRISH DANCING

6.30pm

Caledon Community Centre

T: Kathleen - 07702 232 464

WI

Every 2nd tuesday of the month

7:30PM - 9.30pm

Caledon Community Centre

WEDNESDAY

ART SALAD

EVERY 2ND WEDNESDAY

OF THE MONTH

10:30pm - 12noon

Caledon Community Centre

SOCIAL CRAFT MORNING

10am to 12pm

Every other Wednesday

(next on 6 March)

Napsbury Pavillion

FACEBOOK @ MADHOUSE CRAFTSMUM

KEEP FIT

3pm - 4pm

Caledon Community Centre

T: Janet - 01438 840519

ZUMBA

7.15pm - 8:15pm

Caledon Community Centre

E: micheleplummer@talk21.com

WEDNESDAY

PILATES

7pm - 9pm

Morris Way Pavilion

T: Joanna - 07740 930263

THURSDAY

COMPUTER FRIENDLY

9:30am - 11:30am

Caledon Community Centre

T: 01727 617 359

LINZIE'S MUSIC GROUP

10am - 10:45am

Napsbury Pavilion - Term Time

T: 07956 857589

SEATED EXERCISE

10am - 11am

Caledon Community Centre

T: 01727 821314

SEATED YOGA AND

RELAXATION

11am - 12noon

Caledon Community Centre

T: 01727 821314

LUNCH CLUB

12noon

Caledon Community Centre

T: 01727 821314

THURSDAY

LONDON COLNEY

LIBRARY

1pm - 5pm

TAE KWON DO

4pm

Caledon Community Centre

T: Chris Snow - 07960 476124

ROYAL BRITISH LEGIONS

Thursdays 7.30pm to 10.00pm

(fortnightly) Morris Way Pavilion

Rosemary 01582 763736

FRIDAY

OVER 50'S EXERCISE

10am - 11am

Caledon Community Centre

T: Nicki - 07984 928855

ST. ALBANS DISTRICT

FOOD BANK

10am - 12noon

Caledon Community Centre

T: St. Albans Citizens Advice

01727 811 118

SATURDAY

LONDON COLNEY LIBRARY

9:30am - 1:30pm



ST. ALBANS BUILDERS LTD



Based in London Colney providing building services in
St Albans, Hertfordshire and North London.

5% discount to all London Colney residents

St Albans Builders are your number one choice for
House Building from design to completion,
Extensions and Refurbishment.

Our tradesmen are fully qualified and always provide
quality workmanship. All our building services are fully insured
and guaranteed for your peace of mind.

NHBC Registered.



OFFICE: 0800 5677843

TEL: 01727 769483

www.stalbansbuilders.com

info@stalbanbuilders.com



STALBANBUILDERS