



LONDON COLNEY NEWS

Bringing the Community Together

PHOTOGRAPH - STEVE DAVIES

September 2024

What a **THROW BACK** ... Our very **FIRST** advert in the Parish magazine some **TEN YEARS AGO!!**



OLIVER
& AKERS



0.65%
(+VAT)

Having lived and worked in London Colney for years **Anthony Oliver** has partnered up with **Vic Akers** to offer a different approach to selling your property.

'The personal touch' that we offer is **UNIQUE**, we are not simply open and available Mon-Sat 09.00-18.00 we appreciate that life is busier than that.

Our promotional fee is 0.65% (+VAT) for ALL INSTRUCTIONS

Call today for a free confidential valuation

01727 580085



Sales recently agreed in your area!!

Some things have changed...but we are still **THE LOCAL** agent for London Colney!!



OLIVER
& AKERS

Estate Agency with a personal touch!

www.oliverandakers.com

4

CHANGES ARE COMING



HAVE WE GOT SOME NEWS FOR YOU!



WELCOME VICAR

9



HAPPY BIRTHDAY DOODLEBUGS

16

9

BERRY TASTIC



27

KEEP AN EYE ON THE DIARY... THERE IS SOMETHING FOR EVERYONE!



PARISH DETAILS

Elected Representatives

NORTH WEST WARD

Councillor Tony Lillico

T: 07901 922 404

E: Cllr.tony.lillico@londoncolney-pc.gov.uk

Cllr.tony.lillico@londoncolney-pc.gov.uk

Councillor Liz Needham

E: Cllr.liz.needham@londoncolney-pc.gov.uk

Cllr.liz.needham@londoncolney-pc.gov.uk

Cllr Pok Thoree

E: Cllr.pok.thoree@londoncolney-pc.gov.uk

Cllr.pok.thoree@londoncolney-pc.gov.uk

Cllr Liz Winstone

E: Cllr.liz.winstone@londoncolney-pc.gov.uk

Cllr.liz.winstone@londoncolney-pc.gov.uk

colney-pc.gov.uk

EAST & SOUTH WARD

Cllr Karl Mugele

E: Cllr.karl.mugele@londoncolney-pc.gov.uk

Cllr.karl.mugele@londoncolney-pc.gov.uk

Cllr Rob Prowse

E: Cllr.rob.prowse@londoncolney-pc.gov.uk

Cllr.rob.prowse@londoncolney-pc.gov.uk

Cllr Dave Winstone

E: Cllr.dave.winstone@londoncolney-pc.gov.uk

Cllr.dave.winstone@londoncolney-pc.gov.uk

NAPSURY WARD

Cllr Vicki Hopcroft

E: Cllr.vicki.hopcroft@londoncolney-pc.gov.uk

Cllr.vicki.hopcroft@londoncolney-pc.gov.uk

Cllr Keith Loud

E: Cllr.keith.loud@londoncolney-pc.gov.uk

Cllr.keith.loud@londoncolney-pc.gov.uk

ST ALBANS DISTRICT COUNCIL

London Colney Ward

Councillor Tony Lillico

T: 07901 922 404

E: Cllr.T.Lillico@councillor.stalbans.gov.uk

Cllr.T.Lillico@councillor.stalbans.gov.uk

Councillor Mike Hobday

T: 0785329207

E: Cllr.m.hobday@councillor.stalbans.gov.uk

Cllr.m.hobday@councillor.stalbans.gov.uk

Councillor Emma Turnbull

E: Cllr.e.turnbull@councillor.stalbans.gov.uk

Cllr.e.turnbull@councillor.stalbans.gov.uk

ST ALBANS DISTRICT COUNCIL -

Napsbury, Park Street Ward

Councillor Syed Abidi

T: 07980 323673

E: cllr.s.abidi@councillor.stalbans.gov.uk

cllr.s.abidi@councillor.stalbans.gov.uk

Councillor Terrie Smith

T: 07850 056 835

E: cllr.t.smith@councillor.stalbans.gov.uk

cllr.t.smith@councillor.stalbans.gov.uk

Councillor Nuala Webb

M: 0777 9935354

E: cllr.n.webb@councillor.stalbans.gov.uk

cllr.n.webb@councillor.stalbans.gov.uk

HERTFORDSHIRE COUNTY COUNCIL

Councillor Sarah Tallon

M: 07518 818 601

E: contact@sarahatallon.org

MEMBER OF PARLIAMENT

Daisy Cooper MP

House of Commons,

Westminster, London SW1A 0AA

T: 01727 519 900

E: daisy.cooper.mp@parliament.uk

Chief Executive Direct Line Jane Johnstone: 01727 261 101 E: ceo@londoncolney-pc.gov.uk

London Colney Parish Council, Caledon Community Centre, Caledon Road, London Colney, AL2 1PU

T: 01727 821314 | E: info@londoncolney-pc.gov.uk | W: www.londoncolney-pc.gov.uk

ADVERTISE WITH US

CIRCULATION - The London Colney News is distributed to over 4,000 households. If you would like to contribute to the content of the next issue, please get in touch. We also offer a design service if you would need an advert created.

For more information email us: events@londoncolney-pc.gov.uk

NEXT ISSUE: DECEMBER 2024 AD & COPY DEADLINE: 1ST NOVEMBER

The Parish Council does not endorse the advertisements seen in this publication.

Articles should be sent to the editor, Events and Community Officer c/o London Colney Parish Council, Caledon Community Centre, Caledon Road, London Colney, AL2 1PU or please email: events@londoncolney-pc.gov.uk. The editors of this magazine rely on contributors for the accuracy of their articles. We regret that we cannot check all the facts, but we are happy to consider printing corrections if errors are brought to our attention. Whilst the editors endeavour to include all items submitted by the deadline given, pressure on space may sometimes mean that items will be held over for consideration in future issues and may not therefore appear in the current issue. Articles may be edited for length or clarity.

Designed by MINIMIZE Creative Solutions

CHANGES TO THE HOUSE BUILDING TARGETS



**Chairman
Tony Lillico**

FINANCING FOR THE FUTURE
The last few months have seen significant changes in the council as our new CEO settles into her role. She has been working closely with all 9 councillors to shape the strategy of the parish council for the coming years.

A key part of this is making sure we have a balanced operational budget but more importantly we need to put in place a long-term capital budget for replacement of run-down plant and equipment and refurbishment of our facilities.

Maintaining village sports facilities, green spaces and woodland is the biggest part of the role of the council and this cannot be done with equipment that has passed its sell by date. London Colney is lucky enough to have sports fields spread across the village, extensive woodland and green spaces around the river but maintaining all of this is our biggest expense and we need to ensure we can do it

as cost-effectively as possible.

Likewise, the Caledon Centre and our other community facilities need investment. Many public buildings including two in St. Albans have had to be demolished due to the presence of RAAC aerated concrete used in construction during latter part of the twentieth century.

We have finally had it confirmed by professionals that the Caledon Centre is RAAC free, but they have also confirmed that significant investment is required to bring it up to standard. Work to address asbestos related issues has already been completed and other major work is in planning.

CHANGES TO THE HOUSE BUILDING TARGETS

Every time I am asked to write this article something new seems to come up on the planning front and this is no exception. Many people are aware that national government sets the numbers for new housebuilding and local authorities have to find the sites.

Following the general election, there was a change of government and Angela Rayner has now taken over from Michael Gove as secretary of state for local government. One of her first acts was to issue new housing targets for local authorities to incorporate in their local plans.

For St. Albans this means a massive increase from 15,096 to 26,337 dwellings between 2025 and 2041. On the original figures London Colney's share was 520 which we were expecting to be reduced following last year's consultation.

The likelihood now is that London Colney's share will rise proportionately, but how and where space for another 400 homes in the parish can be found still has to be decided. Planning officers, who take an objective view of this independent of politicians, will make their recommendations in the Autumn.

THE WHITE HORSE PUB CAR PARK

The controversial application to build 4 flats on part of the car park of the White Horse has finally been rejected by planning inspectors.

I wanted to pay tribute to the former district councillors Guy Gampell and Simon Calder who worked hard to achieve this result, working closely together and with pubgoers, local residents and the parish council irrespective of party-political differences.

The parish council have now obtained ASV (asset of community value) for all of the public houses in London Colney and we want to ensure the long-term viability of them all.



The Gift Of Christmas Biscuits

Once again, we are delighted to offer those Over 70 living in the village a gift of Christmas Biscuits. If you are over 70 and live in the village, can you please complete and return the form below

This year there will be a collection only service.

Christmas Biscuits will be available to collect from the Caledon Community Centre from Monday December 2nd until Friday December 13th between 9am - 1pm daily (not weekends) Please return the form to the Christmas Biscuits post box in the Caledon community Centre. If you are unable to collect yourself, please fill in the form and add a nominated person to collect on your behalf.

***Please remember it is one box per household**

NAME:.....

ADDRESS:.....

POST CODE:.....

TELEPHONE:

NOMINATED PERSON TO COLLECT IF NECESSARY

Please return by 15th November 2024

ART EXHIBITION RAISES MONEY

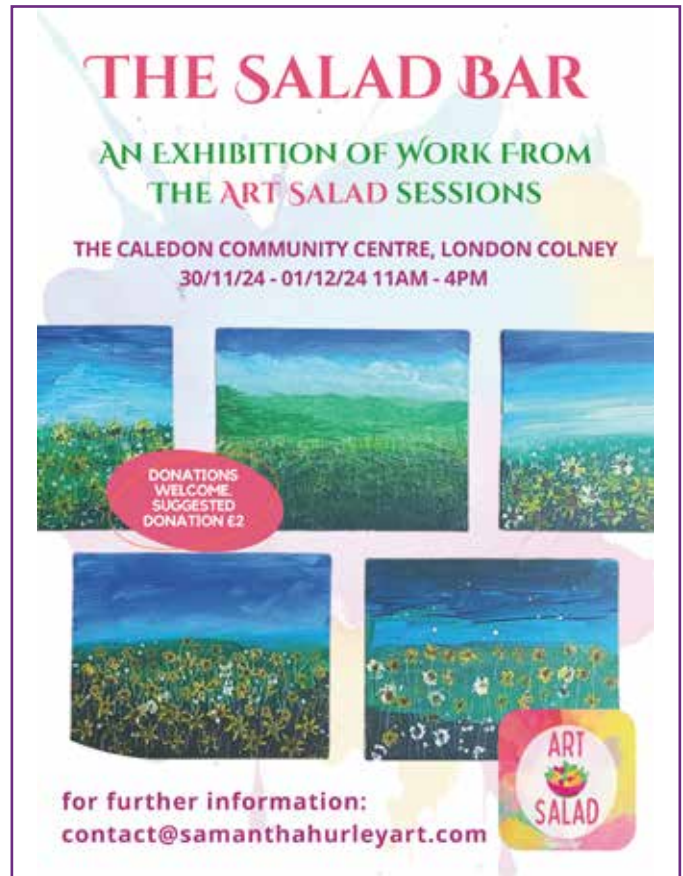
Art Salad is a free monthly workshop, run by a local artist and some volunteers, providing older people and those with dementia a fun, creative experience, while enjoying a cup of tea and a chat in a relaxed and informal setting. The classes have gone from strength to strength, and we are really excited to announce that this winter we will be holding The Salad Bar, an exhibition of work from the Art Salad sessions.

We are so proud of the work our participants create, and this exhibition will showcase some of their favourite pieces. Greeting cards & postcards will be available to buy. All donations and proceeds will go directly back into the running costs of the group, to enable us to keep offering Art Salad contentment to as many people as possible - for FREE!

Please do come along and see what Art Salad is all about, and meet the team and some of our contributing artists!

The Salad Bar exhibition will run from 11am - 4pm on Saturday 30th November & Sunday 1st December, at the Caledon Community Centre.

We are grateful to London Colney Parish Council for their generosity in providing exhibition space in the Caledon Community Centre, and for their continued support with the use of the room for the monthly sessions.



THE SALAD BAR
AN EXHIBITION OF WORK FROM
THE ART SALAD SESSIONS

THE CALEDON COMMUNITY CENTRE, LONDON COLNEY
30/11/24 - 01/12/24 11AM - 4PM

DONATIONS WELCOME
SUGGESTED DONATION £2

for further information:
contact@samanthahurleyart.com

ART SALAD



YOUR LUNCH CLUB

Our Lunch Club takes place every Tuesday and Thursday at the Caledon Community Centre opening at 11.45am.

We offer both a 2-course option of either a light starter followed by a main course or, a main course followed by a scrumptious dessert @ £7.00 per person.

Our 3-course option is £8.50 per person, and these options are available at both weekly sessions.

We can cater for up to 25 lunch guests each session.

Our nutritionally balanced meals are homemade on site by our wonderful Chef Vicky. We are also very lucky to have an amazing team of Lunch Club volunteers who help at each session, and we are very grateful for all the time and help they give.

Menu options are displayed in advance at the Caledon Community Centre and are up on the wall on the Lunch Club notice board.



We ask that if you do have any medical dietary requirements or allergies that you let us know in advance so that we can cater for your needs.

We often have themed Celebratory days or occasional lunches. Our last one was to commemorate D Day on June 6th.

In December we will be having our Christmas Lunches. These are a 3-course traditional Christmas Lunch. They are very popular and as such we

will be prebooking these.

Prebooking will open on Tuesday November 19th. Our final lunch club of 2024 will be on December 19th and we will reopen on Tuesday January 7th 2025.

Lunch Club really is a wonderful way to meet and chat to new people over delicious home cooked food.

We warmly welcome anyone who would like to join us.

See you there!

ST PETERS CHURCH HAS A NEW VICAR!

It was an absolute pleasure and a privilege to be installed as the new Vicar of St Peter's Church here in London Colney. My name is the Rev Tom Smith and I'd like to offer my appreciation to all who have welcomed me and my wife Dayna to the village.

I am very much looking forward to getting to know and serve you all, whether formally in our church or out and about in the shops, pubs and cafes. It was a busy start to my ministry here at St Peter's before the pace slowed, the school's broke up, and the sun shone.

As we reach the final weeks of summer, there is much planned at our church for the months ahead. The church is reaching out to families and children through launching a new free Baby and Toddler Group in term-time on Tuesday mornings between 9.30am - 11.30am beginning on 10th September. All pre-school children and babies are welcome to bring their parents, grandparents and carers along for a time to meet, to share and to play.

Also, we are introducing a Children's service each month when the youngsters will lead much of our worship. Our first Children's Service will be on our 'Back to Church' Sunday at 10am on 8th September. This dedicated and regular service will resume at the same time on the first Sunday of subsequent months.

By the time you read this, the conkers hanging from the huge Chestnut Tree on the Green by the bridge will be almost ready to drop. As these and the leaves begin to fall as a sign of autumn, Harvest Time will be upon us. At St Peter's Church we celebrate our Harvest Festival Service at 10am on Sunday 6th October, again, a Children's Service to give thanks for all we receive from God's creation.

From the excitement of new beginnings and our Harvest celebrations, we move into the more reflective season of remembrance. All Hallows (Saints) Eve give its name to the now popular Halloween, and while many will 'trick or treat', the church holds dedicated services remembering All Saints, those instrumental on building up the church, and All Souls, those dear to us who we see no more. All Souls is a sorrowful yet beautiful service of remembering our loved ones who are named as part of the service and where a candle is lit for each soul passed.

On Remembrance Sunday, we come together at the War Memorial in giving thanks for and commemorating all those who have died in war, especially those from our village. As the season of remembrance ends, it acts as a pivot to then look towards new life and our subsequent Christmas celebrations.

Our church at St Peter's will now be open more during the week for all to pray or just sit in quiet. We are here to serve you and the whole of the village. With every blessing and prayer,

Rev Tom Smith



DATES FOR YOUR DIARY

SEPTEMBER

- 8th - 10am - Children's Service, 'Back to Church' Sunday
- 10th - 9:30am - 11:30am - Launch of our New Free Baby and Toddler Group
- 27th - 10:30 am - 12:30am - Macmillan Coffee Morning

OCTOBER

- 5th Harvest Supper and Quiz
- 6th - 10am Children's Service, 'Harvest Festival'

NOVEMBER

- 2nd - 5pm All Souls Service
- 3rd - 10am Children's Service, 'All Saints'
- 10th Remembrance Sunday Service, and Act of Remembrance at War Memorial

DECEMBER

- 19th - 6pm Carols on the Green at Riverside
- 22nd - 6pm Nine Lessons and Carols
- 24th - 4pm Children's Crib Service
- 24th - 11.30pm Midnight Mass
- 25th - 10am Parish Eucharist



LITTLE NIGHTINGALES 17 YEARS OF CHILDCARE

Little Nightingales Nursery has been open for 17 years. Established by Elena & Keith in 2007 in their former home, a delightful little cottage on the High Street, starting out with just 13 children and 5 staff.

Fast forward to today and an expanded Little Nightingales is now the longest established nursery in London Colney with 100 registered children and 20 staff spread across their 3 classes. The nursery still feels very much like home with an onsite chef creating delicious nutritionally balanced meals in what was the former family kitchen. The kitchen can cater for any dietary needs and allergies if requested.

The Nursery is divided into areas for learning and play, this includes a large outside space and garden that still maintains the feel for the children of being in a home environment.

Little Nightingales offer flexible hours and are open daily from 7.30am - 6.30pm Monday to Friday. They also offer a term time only and are open 51 weeks of the year closing only for 5 days during the Christmas period. They recognise the importance of flexibility for parents and understand parental expectations.

The acceptance age range starts from 3 months up to 5 years, and they ask for a minimum of 2 sessions per week although the average is 3 sessions for most children.

Since its inception, over 600 children have passed through the caring hands of Little Nightingales, a nursery that has transformed a former home into a welcoming haven for many young ones. It is more than just a nursery; it is a home.

There is also a Little Nightingales on Alexander Road at London Colney Primary school with 54 children in the age 2-5 range. This site offers 9.00am - 3.00pm term time places, ideal for siblings in the school.



COME AND MEET THE TEAM!

Little Nightingales Nursery
Nightingale Cottage, Barnet Rd,
London Colney, St Albans AL2 1BG
Call us on 01727 827533

Visit the website www.littlenightingales.com
Follow us   @LITTLENIGHTINGALESNURSERY_



LITTLE NIGHTINGALES DAY NURSERY BARNET ROAD

The Day Nursery is open 51 weeks of the year from 7:30am - 6:30pm and caters for ages from 3 months to 5 years. Our homemade meals are included in the price. We now offer funded places from 9 months old.



LITTLE NIGHTINGALES PRESCHOOL ALEXANDER ROAD

Term time only, open 9am - 3pm, this Preschool consists of a larger, open plan space leading off to our wide range of facilities. With free flow access to our outdoor classroom and a large garden that is used all year round. We now offer funded places from 9 months old.

CALL 01727 827 533 FOR MORE INFORMATION WWW.LITTLENIGHTINGALES.COM

LOCAL AVIATION MUSEUM WINS INTERNATIONAL AWARD



The de Havilland Aircraft Museum has been acknowledged by TripAdvisor every year since 2016. Once again, the museum has been awarded the Travellers' Choice Award, which puts the museum in the top 10% of world-wide attractions.

While there is an increasing number of exhibits to engage the technically minded enthusiast, younger visitors are provided for too, with hands-on activities, a craft table, quiz trail and play area. Offering catering facilities, café and conference areas, the museum is a regular venue for car clubs, special interest groups and reunions. Recently, over 150 former employees from Rolls-Royce, met here for their second reunion.

Although the museum has always welcomed school parties, the recent appointment of a schools' liaison specialist means that bespoke arrangements can be agreed. Music at the Museum concerts, with a focus on material from the 40s, 50s and 60s, are now a regular summer feature. We are just down the road from where you live and open Tuesday to Sunday from 10:30. So come along and get close to the

aircraft, exhibits and the rest. After all, we are 'a lot more than a museum'. Established in 1959, the de Havilland Aircraft Museum was Britain's first aviation centre. Its 20 aircraft include the iconic Mosquito and Comet, the world's first commercial jet airliner. As well as artifacts and materials to handle, there are equipment demonstrations, talks, rare film clips and newsreels.

All aspects of operations are provided by volunteers who recently received The Queen's Voluntary Service medal. Named as one of the 'best small museums' by The Sunday Times, it secured the Travellers' Choice Award for 2024. For more details go to www.dehavillandmuseum.co.uk.



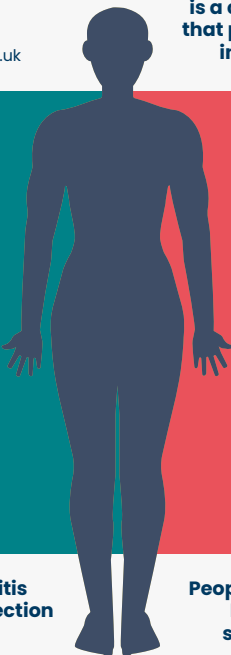
WHAT IS M.E.? FIBROMYALGIA? LONG COVID?

An estimated 15-30 million people around the world are living with M.E. including at least 250,000 people in the UK

Myalgic Encephalomyelitis (ME) or Myalgic Encephalomyelitis/Chronic Fatigue Syndrome (ME/CFS), is a complex chronic disease that presents with symptoms in multiple body systems.

hertsmecfs.org
meaction.net
meassociation.org.uk

Light, sound or smell sensitivity
Heart Palpitations & Chest Pain
Immune symptoms: tender lymph nodes, recurrent sore throats, fevers, or flu-like symptoms,
Temperature regulation difficulties, cold or heat intolerance



Cognitive dysfunction & orthostatic intolerance
Dizziness
Gastrointestinal symptoms: nausea or abdominal pain
Post-exertional malaise
Muscle aches & Cramps

Myalgic encephalomyelitis (ME), is triggered by infection in up to 80% of cases. Preliminary studies are now showing that nearly half of people with Long COVID are presenting with ME/CFS.

People who experience Post-Exertional Malaise (PEM) should be advised to rest & pace their activity.

#STOP REST PACE

Stop the spread this winter.

FLU VACCINATIONS

We hope everyone has had a lovely summer and is enjoying the sunny weather. We will be starting the flu vaccination clinics in October.

The following groups are eligible for a free flu vaccination:

- All children aged 2 or 3 years on 31 August 2024
- Those aged 6 months to under 65 years in clinical risk groups
 - Pregnant women
 - Those aged 65 years and over
 - Those in long-stay residential care homes
 - Carers
- Close contacts of immunocompromised individuals

If you are in one of the above groups, it is very important that you have your flu vaccination. We will be holding pre-bookable clinics for the vaccinations and will be texting eligible patients to confirm dates and times at the beginning of September. We will also be offering pneumonia, shingles and RSV vaccinations at the surgery to all eligible patients.

For further information visit the website: www.nhs.uk/conditions/vaccinations/flu-influenza-vaccine



The flu virus kills almost 11,000 people and hospitalises tens of thousands more in England in an average year. It's more important than ever to get your flu jab this year.

Find out if you're eligible for a free flu vaccine at nhs.uk/wintervaccinations



BERRY - TASTIC

DEBORAH WINS

London Colney Women's Institute would like to congratulate and thank their silent hero, Deborah Clark, who undertakes so many different roles to help keep the group running smoothly.

Not only does she always provide London Colney Parish Council with an editorial piece for their London Colney Magazine, she has delighted Hertfordshire Federation of WIs with her winning photographs, published in the Hertfordshire WI calendar every year.

This year the competition was

'Fruits and Berries' themed. Deborah has been awarded the overall winner of the 2025 calendar competition, with her striking photo of pyracantha berries.

Well done Deb, your enthusiasm and dedication to London Colney WI is highly appreciated! With a growing membership, we really enjoy our meetings listening to some excellent speakers and meeting old and new friends.

We meet on the second Tuesday of the month at 7.30 p.m. in the Community Centre, Caledon Road, London Colney, AL2 1PU.

LONDON COLNEY W.I. (WOMEN'S INSTITUTE)

Our evenings are very varied with a good selection of speakers and craft evenings.

Tuesday, 10th September 7:30pm

We welcome back our favourite professional wildlife photographer, Tom Way. Sit back and wonder at his patience in taking such incredible photos.

Tuesday, 8th October 7:30pm

We have changed the programme to enable us to celebrate our 55th anniversary. This will now be Music through the 55 year.

Tuesday, 12th November 7:30pm

David Tompkins is a magician and so we think this evening will be a magical experience.

Tuesday, 10th December 7:30pm

Our members only Christmas Party.

If you were to join before, you would be able to come along and have some fun.

Tuesday, 14th January 7:30pm

'Knowing Me, Knowing You'. Baffled? Come and find out!

We have refreshments, competitions and a raffle. Annual membership is £48 but you may come as a visitor for the first time for just £5. Do come along, a big welcome awaits you. Please email londoncolneywi@gmail.com if you would like to become a member.

HATE GYMS? LOVE GYMOPHOBICS!



Focusing on ladies over 40!

♥
Amazing results

♥
Tailored support

♥
Drop a dress size in weeks

♥
No men, no mirrors, no lycra

♥
Fun & friendly

♥
All sizes & fitness levels

♥
Improve your overall health

♥
Improve strength, mobility & flexibility

♥
Eases menopause symptoms

Our female-only environment creates a safe haven for women and our highly-trained instructors guide ladies every step of the way. Members receive a personalised programme specifically built around individual needs and regular 1-2-1 reviews keep members on track.

You don't hear clanking weights or whirring treadmills in our centre. Our Instructors are also trained to provide nutritional advice.

♥
We aren't just a gym, we are a whole lifestyle package revolutionising women's health and fitness.

LADIES ONLY - 30 MINUTE WORKOUT

☎ **01707 707710**

📍 **Rear of the Hatfield Tap, Bishops Rise, Hatfield, AL10 9BZ**
✉ Hatfieldgymophobics.co.uk [f GymophobicsHatfield](https://www.facebook.com/GymophobicsHatfield)



“
We are
a good
school
”



London Colney Primary & Nursery School

Alexander Road, London Colney, Herts AL2 1JG

We believe that every child coming to our school is an individual and has something to offer. Our aim is to encourage, motivate and help all children reach their potential during the time they spend with us.

We now offer quality childcare before and after school from 7.30am – 6pm, for nursery through to Year 6, for children attending our school. The Laurels Club is run by London Colney Primary School staff and has wonderful facilities so that children feel happy, stimulated and safe.

If you would like to visit our lovely school and see for yourself what we have to offer, contact the School Office on 01727 823283 to arrange a visit. We look forward to seeing you!

**We are a happy, caring, fully inclusive school
with our children at the heart of all we do.**



London Colney Primary & Nursery School

Headteacher: Sarah Joyce

www.londoncolney.herts.sch.uk

WALSINGHAM WAY REWILDING PROJECT

The rewilding project we initiated back in February has made remarkable progress, with an impressive 70% of the planted shrubs and saplings now well established just six months on.

Most of the trees remain protected by guards, which we proudly repurposed from the Tyttenhanger estate—an excellent example of true recycling and cost savings.

As we continue to enhance the area, our next steps include introducing additional elements to support local wildlife and biodiversity. We plan to install bug hotels, watering holes, and bird and bat boxes.

We also aim to create dead wood habitats and a wildflower meadow, along with placing benches for visitors to enjoy the natural beauty.

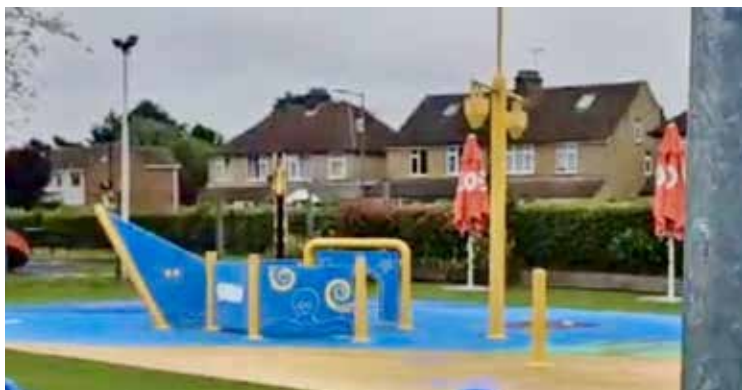


In keeping with our commitment to sustainability, we are utilizing 'grey' or waste water from the splash park on Morris Way in a water bowser to water the plants and trees, including those in Walsingham Way.

This approach not only conserves fresh water but also makes efficient use of available resources.

To further ensure the young saplings receive the care they need, the Parish Council grounds team is dedicated to maintaining the health and growth of the vegetation, especially during dry periods.

We've established the "Friends of Walsingham Way" group, and we invite interested individuals to join by



scanning the QR code. Whether it's watering, strimming, or nurturing the young saplings, your involvement will be invaluable.

At the heart of the plantation, amidst the carved footpaths, stands a British Oak tree, planted to commemorate the coronation of King Charles III.

Join us in this exciting journey of rewilding and community engagement, and help make Walsingham Way a thriving sanctuary for nature and a beautiful space for all to enjoy.



Friends of Walsingham Way
WhatsApp group



LEIGH CASLING
SINGS FROM
Swing TO THE King

An evening of fabulous music from Swing, 1960s Legends, to the King of Rock & Roll
Elvis Presley

Scan QR code for info & tickets

Friday
29th November @ 7.00pm

CALEDON COMMUNITY CENTRE
Caledon Road, London Colney,
Hertfordshire AL2 1PU
www.londoncolney-pc.gov.uk

1ST LONDON COLNEY SCOUT GROUP

The 1st London Colney Scout Group has been part of the local community for over 106 years, providing fun and adventurous activities as well as life skills to both boys and girls of all ages in a safe and friendly environment.

The village Scout HQ is located at the end of Chicken Lane on land that was once open fields used to home and breed, you guessed it, chickens! Now long gone the current building and grounds is used regularly during term time by upwards of 200 young members of all ages along with our volunteer leaders, admin and committee members.

It is also made available as an events hall for locals to host parties, celebrations, kids play groups and fitness groups including both Zuma and boxing.



The Squirrels are our youngest section aged between 4-6 years, and only started back in 2022, they meet on a Monday afternoon. There are many planned activities that provided to our young members each week, here the Squirrels are playing games and getting crafty.

Our Beavers section aged between 6-8 years meet on both a Tuesday and Wednesday evening. They're



the right age to get out and explore the surrounding area and their own abilities. Here they are out exploring our local community along the River Colne and examining water and nearby plant life, learning about environmental and conservation issues, and climbing new heights trying out new adventurous activities.

The Cubs section aged between 8-10 years and meet on a Monday and Thursday evening like to take on adventurous activities below they



are getting bike safety - ready for the summer, as well as taking part in one of the more enjoyable activities, axe throwing...

One of our older sections Scouts aged between 10-14 years who meet on a Friday evening develop their knowledge and life skills.



Here our Scout taking part in a presentation about bee keeping, what

part they pay in our environment and how honey is extracted, as well as preparing, cooking food a learning about food hygiene.

Our oldest section are our Explorers aged between 14-18 years and meet on a Wednesday evening. As well as taking part in new activities Scouting is a great place to meet new friends and be social, below the Explorers have taken part in an escape room activity, and rifle shooting, just some of the many fun events they get up to.

The Explorers also volunteer with the younger sections helping as young leaders.

The 1st London Scout Group also plays it part to the wider community, from putting on Jumble sales to help raise funds for the group as well as taking



part in the Remembrance Day Parade each year.

For more information about joining us as either as a young member or being involved as a volunteer please contact myself, Yeti at yetiburnetti@icloud.com

Yeti / Ian Group Lead Volunteer 1st London Colney Scout Group Explorer Scout Leader
1st London Colney Scout Group St Albans District

Here are just a few of the other fun and exciting activities we get up to at the 1st London Colney Scout Group...



LONDON COLNEY LOCAL HISTORY SOCIETY

London Colney Local History Society was founded in 1997.

Since that time an impressive archive has been assembled comprising over 2,000 photographs, a newspaper collection together with document records and other artefacts relevant to the history of London Colney.

There is a fine collection of sporting trophies and cups from the former London Colney Senior School.

Activities include a magazine published twice yearly and an annual two day exhibition. This year the theme of the annual exhibition will be *'The Inns and Alehouses of London Colney'*.



Items from the archive will also be on display. The exhibition is held at the Caledon Community Centre, Caledon Road, London Colney, AL2 1PS.

**Saturday 12 - Sunday 13 October
2024. 10.30 am - 4 pm.**
All are welcome - free admission - refreshments available.

LONDON COLNEY LITTER PICKERS



The London Colney Litter Pickers were out in force once again, enjoying the sunshine during another successful litter pick. In just two hours, our dedicated team collected 18 bags of litter, with 9 of those being recyclables.

We're planning to organize at least one litter pick each month, with times ranging from weekends to evenings and early mornings. If you'd like to join us, it's all very informal—actually quite sociable and fulfilling! Plus, it's a great

way to get outdoors and rack up those steps. In addition to our litter-picking efforts, we are now working closely with St Albans District Council to implement robust measures aimed at stopping fly-tipping on Whitehorse Lane and other areas in London Colney.

A range of covert cameras have been installed to gather evidence, which will help in prosecuting offenders with hefty fines and potential imprisonment for repeat violations.

Specialist teams will be operating throughout the district, with Whitehorse Lane identified as a hotspot. So, if anyone is thinking of fly-tipping, be sure to smile for the cameras—together, we will put an end to this issue.

The London Colney Parish Council (LCPC) would like to extend a huge thank you to all the volunteers in this group and others who work tirelessly to keep our village looking great throughout the year.

We have many exciting projects in the pipeline to further enhance the look and feel of London Colney, so stay tuned!

If you'd like to join our WhatsApp group, simply scan the QR code.



ANDY'S
DRIVING SCHOOL

Learn how to drive with a professional fully certified instructor.

Manual & Automatic Available

Herts Based

Get in Touch:
Andy 07570 257118

BOOK YOUR FIRST 6 HOURS FOR
£174

MacMillan's Coffee Morning
Hosted by Holiday Inn Express
St Albans.

At the Holiday Inn Express we welcome along those of all ages to join our Coffee Morning in aid of MacMillan Cancer Support.

Friday 27th September 2024 10:30am until 12:30pm.

The car park is complimentary whether you are just dropping off or popping in for a slice of cake or two!

Don't forget to bring some change along with you as we will be hosting a raffle and competition for who has the best cake.

All profits made will go to MacMillan Cancer Support.

Look forward to seeing you all.

WORLD'S BIGGEST COFFEE MORNING

WE ARE MACMILLAN. CANCER SUPPORT.

Location:
Holiday Inn Express St Albans
Colney Fields Retail Park
St Albans
AL2 1AB

AN IHG® HOTEL
ST. ALBANS - M25, JCT.22

SUSTAINABLE SATURDAY

On Saturday, July 6th, London Colney Parish Council proudly hosted our first inaugural sustainability event at the Caledon Centre. The event brought together a diverse range of stall holders, including notable organisations, Estarli e-bikes, Greenpeace, Tommy & Lottie, London Colney Hedgehog Rescue, Ver Valley Society, St Albans Cycling Campaign, Playing Out from Sustainable St Albans, Jefferson Eco Arts, The Green House Eco Hub, and Padge's Coffee, who kept everyone refreshed with their delicious coffee and treats.

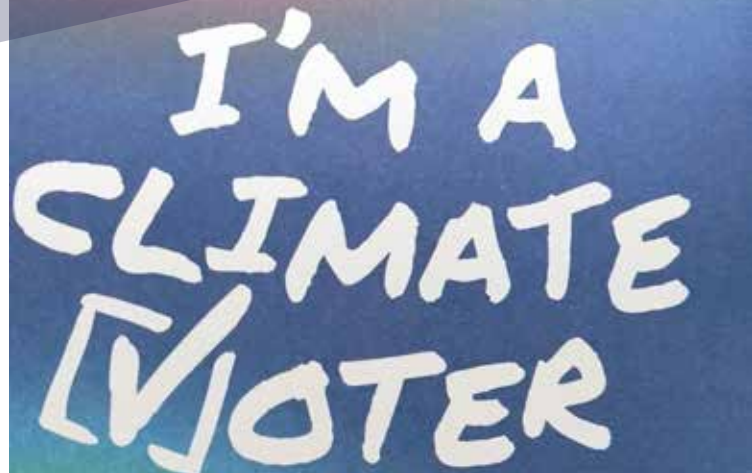


Despite the rainy weather and the event occurring just after the general elections, we were delighted by the turnout and the enthusiastic engagement from the community. The conversations and connections made were invaluable, showcasing a shared commitment to environmental stewardship.



As the Parish Council, we recognize the critical role we play in leading and facilitating such initiatives. It's our responsibility to provide opportunities for education and engagement, helping our community understand the pressing need for sustainable practices. This event was more than just a gathering; it was a demonstration of our collective potential to embrace sustainable living and make meaningful changes in our everyday lives.

Behaviour change is essential to protecting our environment and ensuring a sustainable future. By providing a platform

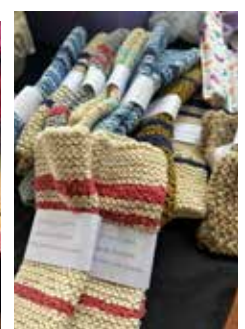


for local organizations and businesses, we aim to inspire and empower our residents to adopt eco-friendly practices. From reducing waste to supporting local wildlife, every small action contributes to a larger movement towards sustainability.



We would like to extend our heartfelt thanks to all the exhibitors for their valuable participation and contributions, and to all the residents who braved the weather to join us. Your enthusiasm and support are what make events like these possible and impactful. We look forward to building on the success of this event and are excited about the possibility of hosting more in the future.

Together, we can continue to foster a culture of sustainability in London Colney, making a positive impact on our environment and our community's well-being. Stay tuned for more details on future events and initiatives—we invite everyone to join us in this vital journey towards a greener future.





HAPPY BIRTHDAY!

Doodlebugs Celebrates Its First Year!

Doodlebugs is thrilled to celebrate its first anniversary! It's been a fantastic year filled with creativity, community spirit, and growth right here in our beloved village.

We were especially honoured to have both the new Mayor of St Albans, Jamie Day and Mayoress Liz Day, join us for the festivities. Their presence made our special day even brighter, and we're grateful for their support.



EXPANDING OUR OFFERINGS

Doodlebugs has been buzzing with activity as we expand our community programmes. Over the past year, we've received such a great response to our after school and holiday clubs that we've decided to add even more to our lineup.

We're excited to introduce the Smart Moves Motor Skills Programme, Mindfulness for Kids sessions, Saturday Focused Art sessions, and Senior Creativi-Tea.

These new groups are all about bringing people together across generations and fostering creativity.



BOOSTING MOTOR SKILLS WITH "SMART MOVES"

The Smart Moves Motor Skills Programme is particularly exciting. We're helping children aged 5 to 11 improve their motor skills through fun and engaging PE-style activities. With various tools and resources, we make learning enjoyable and track each child's progress. It's perfect for kids who need a little extra help with coordination, and we're eager to see our young participants grow and thrive with this new initiative.

NEW PROGRAMMES FOR YOUNG MINDS

Our Mindfulness for Kids sessions are designed to help children manage stress and build emotional resilience through mindful practices and activities. In today's fast-paced world, it's more important than ever to help our young ones find calm and focus.

The Saturday Focused Art sessions will give children a chance to dive deeper into different art forms. These sessions provide a wonderful opportunity for kids to explore their creativity and develop their artistic skills in a supportive environment.



CREATIVE CONNECTIONS FOR SENIORS

We're also excited to launch our Senior Creativi-Tea group, which aims to bring together older community members for creative sessions over a cup of tea. It's a great way to meet new friends and get those creative juices flowing.

We're also looking for retired volunteers to join our team! If you're looking for a fun way to connect and create, come check out our Senior Creativi-Tea group: we'd love to have you with us!

Thank You, London Colney!

A huge thank you to the wonderful community of London Colney and all our existing members for all the support you've shown us in our first year.

Your encouragement has been the driving force behind our journey, and we look forward to many more years of connecting and creating together!

FOR FURTHER DETAILS
ON ANY OF OUR SESSIONS PLEASE
CALL/TEXT 07706 549391

Doodlebugs Arts - Crafts - Wellness

Senior Creativi-TEA

Share your creative skills and meet new friends over a cuppa and cake

Doodlebugs

NEEDLES

London Colney Baptist Church Hall
Kings Rd, London Colney,
St Albans AL2 1EN

Call to enquire on: 07706 549391

Arts - Crafts - Wellness

Connection & Creation through generations

Doodlebugs
Arts - Crafts - Wellness

Minibugs

Mother and Toddler Club

Wednesdays & Fridays
Term-time only
9.30-10.30am
£4.00 per child
Tea coffee biscuits
and plenty of creativity!

London Colney Baptist Church Hall
Kings Road, London Colney,
St Albans AL2 1EN

Call us: 07706 549391
Email us: info@doodlebugsartsandcrafts.co.uk
Visit our website:
www.doodlebugsartsandcrafts.co.uk

RAIL FREIGHT

PARISH COUNCIL LOOKS RESPONSIBLY DOWN THE LINE

A few weeks ago, London Colney Parish Council staff and councillors visited the Radlett / Park Street Rail Freight site, which borders Napsbury Park, to review the proposed plans in detail and assess the work undertaken on the ground.

We are now able to share these comprehensive plans to illustrate the vision and the fundamental reality that is expected to unfold over time. Our visit provided us with a thorough understanding of the project, and we are committed to working closely with Segro to ensure that appropriate mitigations are in place.

Our primary focus is on minimizing disruptions to wildlife, habitats, and the residents of London Colney and the surrounding areas. We recognize the importance of balancing development with environmental preservation and community well-being. As the project progresses, we will continue to advocate for measures that protect local ecosystems and ensure that any impacts are responsibly managed.

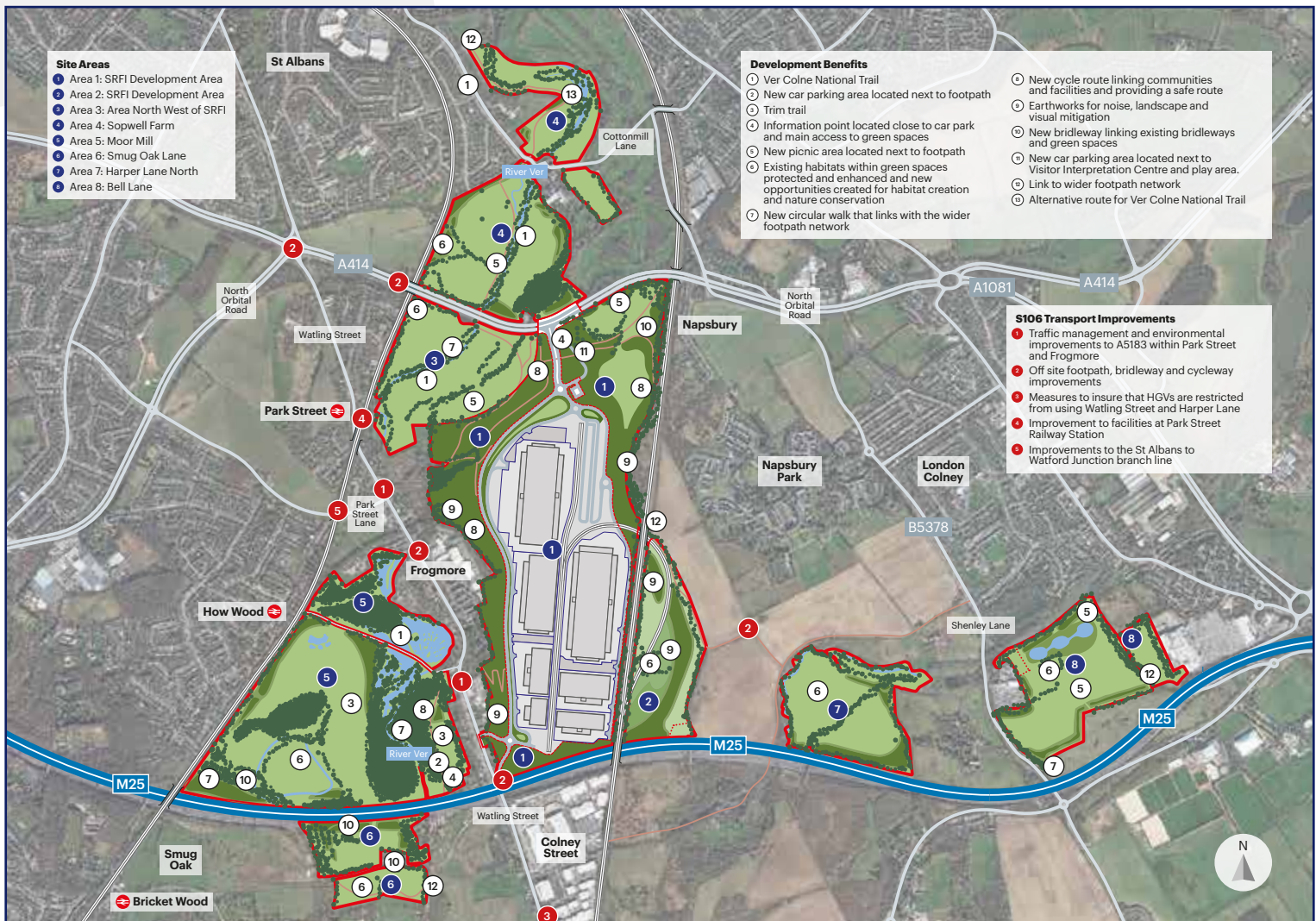
The Napsbury Park Residents Association (NPRO) has been unwavering in its advocacy for the residents of Napsbury Park and the surrounding community. This dedicated effort comes in response to ongoing work being carried

out by Segro, in collaboration with their contractor, Volker Fitzpatrick. Recognising the impact of these activities, particularly the ongoing nighttime work, the NPRO has been actively reporting residents' concerns and has repeatedly requested a reprieve from the disturbances caused by the late-hour operations.

While we have collectively observed the mitigation measures that have been put in place so far, the NPRO is now requesting and advocating for stricter compliance and additional efforts to minimize disruption.

To further these efforts, the NPRO has been liaising directly with Network Rail, Segro and the St Albans District Council (SADC), promoting the community's growing dissatisfaction with the ongoing disturbances and pushing for more effective solutions.

United discussions are currently underway to promote and protect local residents' liberty and interests, with the combined aim of establishing a robust and coordinated approach that will effectively offset the negative impacts of the rail development. The NPRO remains committed to safeguarding the well-being and quality of life for the community over the coming months and years as construction continues.



LONDON COLNEY GUIDING

London Colney Guiding had a fab summer term doing as many jam packed outdoor activities that we could, such as:



- Litter Picking for the Parish Council in the village
- A trip to Oaklands Zoo
- For Volunteering Week (3rd to 9th June) a visit to Tara's Retreat Residential Home
- Wading in the river Ver
- Our annual Colney District 2 day camp at Gillwell Park
- Foraging/Herb Walk
- A visit to the splash park
- Teddy Bear's Picnic for Rainbows
- Global food picnic for Brownies and Guides
- And the Summer Term finishes off with the annual Colney District Water Play Summer Party.

As we head into the Autumn Term some activities already organised involve the Hertfordshire Guiding Golf Badge

and a potential trip to Hudnall Park for a Forest School.

We will also enjoy some good old favourites like a 'Spooktastic Party' and some Christmas Crafting. And as always we all love earning some cool badges.

I would like to say a huge thank you to our adult and young leader volunteers. Their enthusiasm and amazing help are the only way we can keep the meetings going. You are stars!

Our Girlguides are full of energy, positivity and proactivity and always want to 'Lend a Hand'. We are proud of their achievements.

Can't wait for another busy term.



FOR MORE INFORMATION

EMAIL contact@samanthahurleyart OR VISIT www.girlguiding.org.uk

DISCOVER YOURSELF!

BE RELAXED & STRESS FREE



THE PERFECT WAY TO RELAX IS WITH OUR AMAZING FACIALS



BUY IT AS A GIFT OR TREAT YOURSELF!

01727 825 258

07449 773 297

UNISEX SALON

9 HIGH STREET, LONDON COLNEY
ST ALBANS, AL2 1RE

WWW.APPLEONIA.CO.UK


APPLEONIA
BEAUTY STUDIO



Collect 10 stamps and receive a

£50 FUEL VOUCHER*



PICK UP A CARD TODAY!

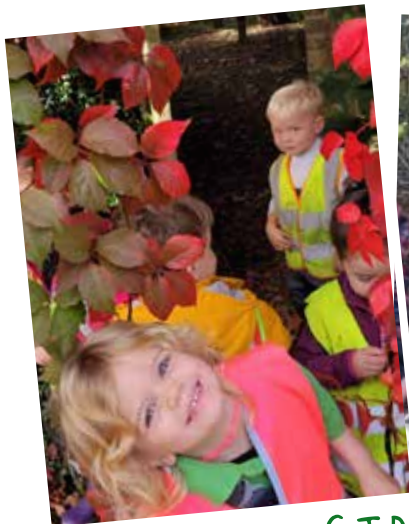
Ask a member of the team for more details.

MKM are your local Builders Merchant complete with a Plumbing and heating department and kitchen and bathroom showroom. We welcome trade & retail customers and our spend incentives apply to all.

London Colney Bypass **London Colney** 01727 324000 **AL2 1HG**



mkm.com



STRONG ROOTS FOREST SCHOOL

THE LOCAL GEM OF AN OUTDOOR FOREST SCHOOL NURSERY HIDDEN IN THE GROUNDS OF THE ALL SAINTS CENTRE

After the thrill of the summer months, we approach the colourful Autumn, with the knowledge that shorter days and longer evenings, are on their way.

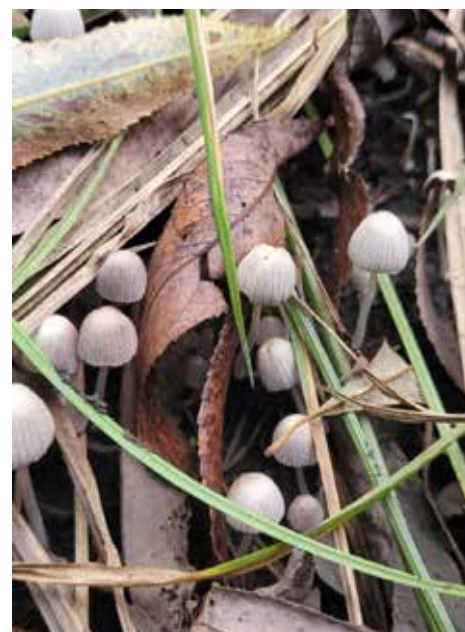
puddles and through big piles of leaves, whilst laughing with their friends. 'Strong Roots Forest School' was graded 'Outstanding' by Ofsted in May 2023.

Borehamwood, Elstree, Whetstone to name but a few, as there are so few Forest Schools around to choose from. We are a small family run businesses and also proud residents of London Colney.

We have also been recently been acknowledged as a 'Forest School Association Accredited Provider'. 'Strong

If you are considering your Nursery options for your child, then please contact us to arrange a visit. Come and see for yourself, how special the environment is.

Wouldn't it be wonderful, to give our London Colney children the best start, before places go to children from further afield?



The children at 'Strong Roots Forest School' love the Autumn! They gather Blackberries and Apples for their snack. They go on 'Fungi hunts' and collect vibrant leaves in a wide spectrum of colours.

The children are excited to jump in the

Roots' is the 'only' Forest School provider in Hertfordshire to be recognised as both 'Outstanding' and 'Forest School Association accredited'.

The Forest School, is based in the village, in the grounds of the former 'All Saints Pastoral Centre'.

We have families who travel from Rickmansworth, Stevenage, Welwyn, Barnet, Hatfield, Potters Bar,

FOR MORE INFORMATION

VISIT THE WEBSITE www.strongrootschildcare.co.uk
EMAIL US strongroots.forestschool@gmail.com
OR SCAN THE QR CODE



Scan me



**GAS HEATING &
PLUMBING SOLUTIONS**

Experienced & Qualified Local Plumbers and Gas Engineers

01727 821 704 | WWW.GHPS.UK

OUR SERVICES:

Plumbing | Heaters, Boilers, Repairs & Maintenance | Boiler Services | Landlord, Gas Safe Certificates & Legionnaires | Gas Appliances | Bathroom and Kitchen | Power Flushing | Air Conditioning | Emergencies



**GUTTER CLEANING &
DRAINAGE SOLUTIONS**

In association with Gas Heating & Plumbing Solutions

- Drain jetting
- Drain Unblocking
- Drain Relining
- CCTV surveys
- State of the art gutter cleaning
- Using Skyvac system
- Reaches upto 50 feet with no ladders
- Domestic and commercial

In association with GHPS  **GAS HEATING &
PLUMBING SOLUTIONS**
Trading for 13 years with over 1,500 reviews at
WWW.TRUSTATRADER.COM



TEL: 01727 821704

A SUMMER PILGRIMAGE JOURNEY TO CHANTRY ISLAND



On a warm June evening, the village of London Colney came alive as 40 “Pilgrims” embarked on a short but meaningful journey to Chantry Island. The event, filled with camaraderie and spiritual reflection, began with a gathering on the village green outside the historic Green Dragon pub.

Before setting off, the group joined in a prayer, setting a tone of reverence and unity. Although the walk to Chantry Island is just a brief 20-minute stroll, it became a memorable experience for many. As they walked, conversations flowed easily among the participants, with strangers quickly becoming friends.

Some shared stories of past pilgrimages, including journeys to the famed Santiago de Compostela. Their tales of adventure and spiritual discovery inspired a sense of curiosity and contemplation among those who had not yet embarked on such a journey.

The pilgrimage was led by Father Patrick Moriarty of St Stephen & St Julian. This year, the walk was especially poignant as it marked one of the first public appearances of the new Vicar of St Peters, Reverend Tom Smith, and his wife.

Having only moved into the vicarage days earlier, the walk offered a perfect opportunity for the community to welcome

them. Reverend Tom's presence added a sense of renewal and hope, as many took the chance to introduce themselves and share in the spirit of the occasion.

Upon arriving at the serene setting of Chantry Island, Father Patrick recounted the story of St Alban, emphasizing the island's historical and spiritual significance. The atmosphere was further enriched by a reading from local resident Mike Woodhams, whose words resonated with the gathered crowd.

The pilgrimage concluded with a return to the Green Dragon, where light refreshments awaited. The warm hospitality provided by Steve and his team at the pub was much appreciated, offering a perfect end to the evening. The event also featured the work of John Andrews, who skilfully captured the essence of the evening in a series of stunning photographs, ensuring the memories would be cherished long after the walk was over.

This summer pilgrimage to Chantry Island was more than just a walk; it was a celebration of community, faith, and the timeless tradition of coming together to share stories, offer support, and create new memories. As the sun set on the village, the Pilgrims departed with a sense of fulfilment, looking forward to the next opportunity to gather in the name of fellowship and reflection.

Providing
home care,
support and
companionship

01582
764305



SCAN ME



Call us to discuss the range of specifically tailored services we can provide for you or an elderly loved one.

www.nannies4grannies.co.uk

WHO DO I CALL?

GRASS VERGES, POT HOLES, STREET LIGHTS?

Herts County Council

www.hertfordshire.gov.uk

T: 0300 123 4040



FLY TIPPING / RUBBISH BINS



St Albans District Council

a.cleanerdistrict@stalbans.gov.uk

T: 01727 809019

PARKING ISSUES

St Albans District Council

T: 01727 845 283



CITIZENS ADVICE

T: 01727 811 118

W: www.castad.org



Need Advice?

Our service is free and confidential

We're trained to advise on virtually any issue including welfare benefits; money & credit problems, employment, housing, education & healthcare and much more. We arm you with all the facts and possible outcomes. That way you can make the decision that's right for you. We also offer practical support such as help with form filling or writing letters

Call 01727 811118 Mon to Thurs 10am-4pm or Fri 10am-1pm.

If you are unable to use our service by phone, we have a limited face-to-face service at The Hub, St Albans, Mon to Fri 10am-1pm

Or find us at Caledon Community Centre Foodbank, every Friday 10am-12noon



Registered charity number: 10418

MINIMIZE

CREATIVE SOLUTIONS

GRAPHIC DESIGNER - PHOTOGRAPHY - MARKETING

GET IN TOUCH WITH MINY TODAY
FOR YOUR DESIGN NEEDS

T: 07808 832 285 E: minimize@live.com

London Colney Community Library

Your local library needs

YOU!

Would you like to join a team of
volunteers helping library
customers?

For further information about how
you can get involved, please contact:

libraries.communityservices@hertfordshire.gov.uk

Our current opening hours are:

Monday 1.00pm - 5.00pm

Tuesday 1.00pm - 5.00pm

Thursday 1.00pm - 5.00pm

Saturday 9.30am - 1.30pm



www.hertfordshire.gov.uk/libraries



Ken Hodson

Local Computer Hardware and Software Repairs,
Upgrades and Advice for Home and Business

Tel. 07974 156743 / 01582 794723

Email enquiries@kenhodsoncomputerservices.co.uk

www.kenhodsoncomputerservices.co.uk

- No fix, no fee for all repairs – you have nothing to lose.
- Low hourly rate.
- Most repairs carried out in your home, if not the computer will be picked up from and delivered back to you.
- Problems with Windows / Applications / Internet / networks fixed.
- Friendly training and instruction available in plain English
- Advice given on upgrades – many older computers can be upgraded at a fraction of the cost of a new machine.
- Upgrades of hardware and software carried out.



PLANT & TOOL HIRE

Over 30 years of industry experience!

FREE DELIVERY AND COLLECTION in St Albans

Follow Us
@centraltoohireltd



01727 846999 | info@central-tool-hire.co.uk | www.central-tool-hire.co.uk
UNIT C11A, THE ALBERT BYGRAVE RETAIL PARK, NORTH ORBITAL ROAD, ST ALBANS, AL2 1DL

RJW

ELECTRICAL SOLUTIONS LTD

07999 488 566
info@rjwelectricalsolutionsltd.co.uk
www.rjwelectricalsolutionsltd.co.uk

APPROVED BY

TAEKWON-DO

Get Fit & Learn Self-Defence

- * Opened 1994
- * Fully insured & Trusted
- * Multi award winning clubs
- * Classes by 3 time hall of famer
- * Classes by 8th Dan Master Coach

2 WEEKS FREE TRIAL

Beginners courses starting now
07960 476124

Only £30 a month
www.stalbanstaekwondo.com

30

years of success

Est. 1994
Hertfordshires multi award winning schools of Martial Arts

CALEDON COMMUNITY CENTRE
Caledon Road, London Colney,
Hertfordshire AL2 1PU
www.londoncolney-pc.gov.uk

Halloween PARTY

☆ Children aged 3-7 years
October 27TH | 4:00 PM-6.00PM ☆
Put on your spookiest costume and join the fun!

Sponsored by:
Little Nightingales Nursery

Scan QR code for info & booking

London Colney

Remembrance Sunday Parade

& Service of Remembrance

SUNDAY 10TH NOVEMBER 2024
Caledon Community Centre,
Caledon Road at 10.30am

Residents are invited to attend the War Memorial for a service of Remembrance from 10.55am.

A collection in aid of the Poppy Appeal will be made during the service.

LEST WE FORGET

London Colney Fireworks

MORRIS WAY PLAYING FIELDS
FROM 4.00PM

Scan QR code for info & booking

www.londoncolney-pc.gov.uk

SUNDAY 3RD NOV

FUNFAIR RIDES - GAME STALLS
MULLED WINE - HOT DRINKS
FOOD STALLS

SPONSORED BY: MKM BUILDING SUPPLIES **MKM**

London Colney

CHRISTMAS LIGHT SWITCH-ON

SUNDAY 1ST DECEMBER 2024
3.30PM-6.00PM

CHESTER GIBBONS GREEN
HIGH STREET, LONDON COLNEY

Join us for an afternoon of Christmas Carols, Market Stalls, Entertainment, Food Stalls, Mulled Wine and the Big Switch-On

Sponsored by:

www.londoncolney-pc.gov.uk

**DATES FOR
THE Diary**



WEEKLY EVENTS IN THE COMMUNITY

WOULD YOU LIKE TO SHARE YOUR GROUP OR ACTIVITY ON OUR WEBSITE?

FOLLOW US AND KEEP UP TO DATE WITH WHAT IS HAPPENING IN LONDON COLNEY

FACEBOOK: [@londoncolneyparish](https://www.facebook.com/londoncolneyparish)
VISIT: www.londoncolney-pc.gov.uk

WOULD YOU LIKE TO SHARE YOUR GROUP OR ACTIVITY ON OUR WEBSITE?

Please send us – a link to your website, your logo and image (optional) and information about your group/sport or activity such as when you meet, who it is aimed at, is there a cost, contact details, what you do.

Email us at events@londoncolney-pc.gov.uk

Ofsted
... good school

LONDON COLNEY PRIMARY & NURSERY SCHOOL

Nursery

Here at London Colney Primary & Nursery School, we believe in children having the strongest start to their education as possible and place a strong emphasis on our Early Years Foundation Stage. Our EYFS is made up of our Nursery and Reception class and is taught and led by teachers and staff who know each and every child in their care.

If you are looking for a Nursery that has a fantastic ethos with an excellent transition into Primary School. Please come and see for yourself what our lovely School has to offer. Please contact the School office on 01727 825 285 should you wish to make an appointment.

We are a happy, caring, fully inclusive school with our children at the heart of all we do.

London Colney Primary & Nursery School
Headteacher: Sarah Joyce www.londoncolney.herts.sch.uk

Ofsted
... good school

MONDAY

SEATED EXERCISE

10am - 11am

Caledon Community Centre

T: 01727 821314

SEATED YOGA AND

RELAXATION

11am - 12noon

Caledon Community Centre

T: 01727 821314

LINZIE'S MUSIC GROUP

10am - 10:45am

Napsbury Pavilion

Term Time

T: 07956 857589

London Colney Library

1pm - 5pm

TAE KWON DO

4pm Caledon Community Centre

T: Chris Snow - 07960 476124

KIDS @THE BASE

4:30 - 6pm

RETURNING SEPTEMBER

Caledon Community Centre

T: Shelley -0797 3466572

IRISH DANCING

6.30pm

Caledon Community Centre

T: Kathleen - 07702 232464

MONDAY

YOGA

6.30 - 7.30pm

Napsbury Pavilion

T: Grace Hynes - 07852 603739

PILATES

6:45pm - 9pm

Morris Way Pavilion

T: Joanna - 07740 930263

FOOT HEALTH CLINIC

First Monday of the Month

Morris Way Pavilion

T: Sandra Gray - 07580572349

TUESDAY

LINZIE'S MUSIC GROUP

10am - 10:45am

Napsbury Pavilion Term Time

T: 07956 857589

LUNCH CLUB

12 noon

Caledon Community Centre

T: 01727 821314

LONDON COLNEY LIBRARY

1pm - 5pm

OVER 60'S BINGO

1:30pm - 4pm

Caledon Community Centre

T: June 01727 823666

T: Jean 01727 823325

TUESDAY

IRISH DANCING

6.30pm

Caledon Community Centre

T: Kathleen - 07702 232 464

WI

Every 2nd tuesday of the month

7:30PM - 9.30pm

Caledon Community Centre

WEDNESDAY

ART SALAD

EVERY 2ND WEDNESDAY

OF THE MONTH

10:30pm - 12noon

Caledon Community Centre

SOCIAL CRAFT MORNING

10am to 12pm

Every other Wednesday

(next on 6 March)

Napsbury Pavillion

FACEBOOK @ MADHOUSE CRAFTSMUM

KEEP FIT

3pm - 4pm

Caledon Community Centre

T: Janet - 01438 840519

ZUMBA

7.15pm - 8:15pm

Caledon Community Centre

E: micheleplummer@talk21.com

PILATES

WEDNESDAY

7pm - 9pm

Morris Way Pavilion

T: Joanna - 07740 930263

THURSDAY

COMPUTER FRIENDLY

9:30am - 11:30am

Caledon Community Centre

T: 01727 617 359

LINZIE'S MUSIC GROUP

10am - 10:45am

Napsbury Pavilion - Term Time

T: 07956 857589

SEATED EXERCISE

10am - 11am

Caledon Community Centre

T: 01727 821314

SEATED YOGA AND

RELAXATION

11am - 12noon

Caledon Community Centre

T: 01727 821314

LUNCH CLUB

12noon

Caledon Community Centre

T: 01727 821314

THURSDAY

LONDON COLNEY

LIBRARY

1pm - 5pm

TAE KWON DO

4pm

Caledon Community Centre

T: Chris Snow - 07960 476124

Fitness, Boxing skills class

6pm Morris Way

T: Ian 07725 265518

ROYAL BRITISH LEGIONS

Thursdays 7.30pm to 10.00pm

(fortnightly) Morris Way Pavilion

Rosemary 01582 763736

FRIDAY

OVER 50'S EXERCISE

10am - 11am

Caledon Community Centre

T: Nicki - 07984 928855

ST. ALBANS DISTRICT

FOOD BANK

10am - 12noon

Caledon Community Centre

T: St. Albans Citizens Advice

01727 811 118

SATURDAY

LONDON COLNEY LIBRARY

9:30am - 1:30pm



ST. ALBANS BUILDERS LTD



Based in London Colney providing building services in
St Albans, Hertfordshire and North London.

5% discount to all London Colney residents

St Albans Builders are your number one choice for
House Building from design to completion,
Extensions and Refurbishment.

Our tradesmen are fully qualified and always provide
quality workmanship. All our building services are fully insured
and guaranteed for your peace of mind.

NHBC Registered.



OFFICE: 0800 5677843

TEL: 01727 769483

www.stalbansbuilders.com

info@stalbanbuilders.com