



LONDON COLNEY NEWS


Bringing the Community Together

March 2025




Photo by Steve Davies

What a **THROW BACK** ... Our very **FIRST** advert in the Parish magazine some **TEN YEARS AGO!!**



**OLIVER
& AKERS**




0.65%
(+VAT)

Having lived and worked in London Colney for years **Anthony Oliver** has partnered up with **Vic Akers** to offer a different approach to selling your property.

'The personal touch' that we offer is **UNIQUE**, we are not simply open and available Mon-Sat 09.00-18.00 we appreciate that life is busier than that.

Our promotional fee is 0.65% (+VAT) for ALL INSTRUCTIONS

Call today for a free confidential valuation
01727 580085



Sales recently agreed in your area!!

Some things have changed...but we are still **THE LOCAL** agent for London Colney!!



www.oliverandakers.com

PARISH DETAILS

Elected Representatives

NORTH WEST WARD

Councillor Tony Lillico
T: 07901 922 404
E: Cllr.tony.lillico@londoncolney-pc.gov.uk

Councillor Liz Needham
E: Cllr.liz.needham@londoncolney-pc.gov.uk

Cllr Pok Thoree
E: Cllr.pok.thoree@londoncolney-pc.gov.uk

Cllr Liz Winstone
E: Cllr.liz.winstone@londoncolney-pc.gov.uk

EAST & SOUTH WARD

Cllr Karl Mugele
Cllr.karl.mugele@londoncolney-pc.gov.uk

Cllr Rob Prowse
Cllr.rob.prowse@londoncolney-pc.gov.uk

Cllr Dave Winstone
Cllr.dave.winstone@londoncolney-pc.gov.uk

NAPSURY WARD
Cllr Vicki Hopcroft
Cllr.vicki.hopcroft@londoncolney-pc.gov.uk

Cllr Keith Loud
Cllr.keith.loud@londoncolney-pc.gov.uk

MEMBER OF PARLIAMENT

Daisy Cooper MP, House of Commons,
Westminster, London SW1A 0AA

T: 01727 519 900 E: daisy.cooper.mp@parliament.uk

Chief Executive Direct Line Jane Johnstone: 01727 261 101
E: ceo@londoncolney-pc.gov.uk

London Colney Parish Council, Caledon Community Centre,
Caledon Road, London Colney, AL2 1PU T: 01727 821314
E: info@londoncolney-pc.gov.uk | W: www.londoncolney-pc.gov.uk

ADVERTISE WITH US

CIRCULATION - The London Colney News is distributed to over 4,000 households. If you would like to contribute to the content of the next issue, please get in touch. We also offer a design service if you would need an advert created. For more information email us: events@londoncolney-pc.gov.uk

NEXT ISSUE: JUNE 2025 AD & COPY DEADLINE: 2ND MAY

The Parish Council does not endorse the advertisements seen in this publication.

Articles should be sent to the editor, Events and Community Officer c/o London Colney Parish Council, Caledon Community Centre, Caledon Road, London Colney, AL2 1PU or please email: events@londoncolney-pc.gov.uk. The editors of this magazine rely on contributors for the accuracy of their articles. We regret that we cannot check all the facts, but we are happy to consider printing corrections if errors are brought to our attention. Whilst the editors endeavour to include all items submitted by the deadline given, pressure on space may sometimes mean that items will be held over for consideration in future issues and may not therefore appear in the current issue. Articles may be edited for length or clarity.

Designed by MINIMIZE Creative Solutions

HAVE WE GOT SOME

NEWS FOR YOU!

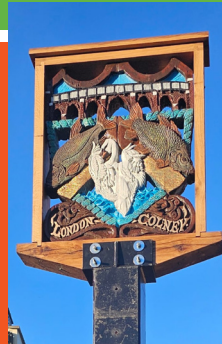
4

A WORD FROM ...



5

VILLAGE SIGN



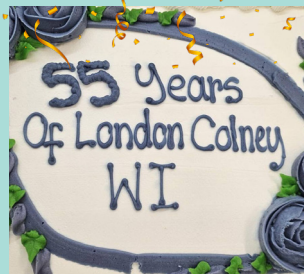
27

SEGRO

SEGRO
UPDATE

14

LONDON COLNEY WI TURNS 55



9

GIRL GUIDES

17



DATES FOR
THE *Diary*

ART SALAD

19



A WORD

from

CHAIRMAN TONY LILICO



Deputy Prime Minister Angela Rayner recently announced that big changes are on the horizon for St. Albans District Council and Hertfordshire County Council. These authorities will be replaced by a single, larger unitary authority, serving at least 500,000 people. While the exact boundaries are yet to be determined, it's likely that London Colney will join an authority covering either the entire county of Hertfordshire or the South/West half of it.

The new authority is expected to be elected in May 2027 as a shadow council before officially taking over in 2028. Though change can feel uncertain, it also presents exciting opportunities. A larger authority could bring greater efficiencies, such as improved contract negotiations and resource-sharing, which may ultimately benefit residents. However, it will be important for us to ensure that London Colney's local voice remains strong.

The Parish Council is already thinking ahead, working with other local councils to identify key services and facilities—like the Alsop Close playpark—that should stay locally managed to preserve their community focus. We will continue to advocate for what matters most to London Colney residents.

On another point I recently received my first on-line insults. Whilst it is now par for the course for councillors, and we are a generally a thick-skinned bunch it is sad that this should be happening in London Colney. But when this happens it is the village that loses out, because it puts off many talented people from standing as councillors. We need more London Colney residents to be thinking about being councillors in the future and they need to feel that they will be working in a safe and comfortable environment

So, I hope everyone will consider their comments before posting. Please remember that councillors are having to deal with difficult decisions when the government is cutting back funding and forcing councils to build more houses. Whilst I am also a district councillor, parish councillors volunteer their time for the love of London Colney, and together, we work through tough decisions.

So, let's all do our part to keep London Colney a welcoming, supportive place where we can engage in thoughtful conversations, lift each other up, and build a stronger, more connected community.

OUR CHIEF EXECUTIVE JANE JOHNSTONE



Since our last update, there's been plenty of activity and progress in our vibrant village. One notable challenge arose at Morris Way Playing Fields, where a sinkhole appeared on one of the main football pitches. The safety of our community is always our priority, and we acted quickly to make the area safe. Specialist surveyors were called in to assess the situation, and we're pleased to report that work is underway to fill the sinkhole and restore the pitch, ensuring it will soon be ready for everyone to enjoy once again.

In other exciting news, London Colney Parish Council will be taking over the running of the Splash Park Café starting in May 2025. This is a wonderful opportunity for the council to provide refreshments at family-friendly prices, including ice creams and snacks (perfect for those sunny days at the park!). We're committed to creating a welcoming space for residents and visitors alike.

We are also delighted to welcome a Community Officer, Sara Penny, to our team. This new role focuses on promoting community engagement, building partnerships, and securing funding streams to enhance life in London Colney. Whether it's fostering new initiatives or connecting with local groups and organisations, this position will help bring new opportunities and benefits to our village.

In January, the SEGRO Exhibition was hosted at the London Colney Community Centre over the weekend of the 18th and 19th. The exhibition was designed to keep residents informed about SEGRO's Rail Freight and Country Park plans. While SEGRO was unable to provide staff for the event, our dedicated Parish Council staff and councillors kindly stepped in to assist. They ensured community questions were addressed and helped make the exhibition a valuable experience for all attendees.

These updates are just a glimpse of the ongoing work and progress in our village. We look forward to sharing more news in future editions and continuing to make London Colney an even better place to live, work, and play.

VILLAGE *sign*

We are delighted to announce that the village sign has now been beautifully restored and is back in its rightful place on the village green.

Originally designed by Frank Casey, this cherished symbol of our community has been given a new lease of life, thanks to the incredible efforts of our grounds team.

A special thank you must go to the Grounds Maintenance team, whose dedication and hard work ensured the project was completed to such a high standard of workmanship,

using wood from a 300-year-old English Oak sourced from Ternex Sawmill of Welwyn Garden City. Scott and the team's meticulous attention to detail and their commitment to the sympathetic restoration in preserving this important part of our village's heritage are deeply appreciated by us all.

If you happen to be near the village green, please take a moment to admire the restored sign. It stands as a testament to the spirit of community and the pride we all share in our village. Thank you to everyone who contributed to this project!



Apply Now

Little Nightingales Nursery

We are now enrolling at both our settings in London Colney.



15/30 funded hours & private places available. Apply today!

Little Nightingales Day Nursery & Preschool

Barnet Road, London Colney,
AL2 1BG

*Open all year & Term time from
7:30am - 6:30pm*

Alexander Road Preschool

London Colney Primary School
Alexander Road, London Colney,
AL2 1JG

*Open Term time
9am - 3pm*

LCPC BUILDING

improvements



London Colney Parish Council runs a Premises and Buildings Sub-Committee to assess, monitor, and maintain the buildings the Parish Council oversees.

The committee is exploring ways to make these buildings both environmentally sustainable and economically viable, ensuring cost-effective improvements for the future.

THE FOUR KEY PROJECTS UNDER REVIEW ARE:

- Caledon Community Centre, including the library, short-medium goals
- Napsbury Pavilion, medium-long term goals
- Morris Way Pavilion, short-medium goals
- Shenley Lane Changing Rooms, for possible upgrades or refurbishment

Each project is led by a dedicated councillor:

- Cllr Rob Prowse oversees the Caledon Community Centre and Morris Way Pavilion.
- Cllr David Winstone leads on Shenley Lane Changing Rooms.
- Cllr Vicky Hopcroft heads up the Napsbury Pavilion.

MORRIS WAY PAVILION

Morris Way Pavilion is an under-used community asset. While the changing rooms are busy on weekends, the conference room is mainly used on weekday evenings, leaving much of the building idle at other times. The building is also cold and expensive to heat during winter, and there is currently no Wi-Fi connection available.

To improve the pavilion's usability, we've launched a project to install a sustainable heating system, potentially using an air source heat pump combined with solar panels and battery storage. We're also reviewing the accessibility of the disabled toilets. These changes will help us create a more energy-efficient, inclusive space that serves the community better.

HOW YOU CAN HELP

If you're a local business or organisation that can offer sponsorship, funding, or volunteer hours to help with the refurbishment of any of these buildings, we'd love to hear from you! Likewise, if you're a resident with suggestions or offers of support, please get in touch with London Colney Parish Council. Together, we can enhance our community spaces for everyone to enjoy.

CALEDON COMMUNITY CENTRE

Built in the 1960s, the Caledon Community Centre is now at the end of its useful life. It hosts Hertfordshire's most-used community library, along with a community hall, lounge and bar, and the parish offices. Unfortunately, the building is in desperate need of modernisation, with a leaking roof, outdated lighting, and old crittall windows in the library requiring urgent attention.

Recent surveys confirm that the building is structurally sound but needs significant investment. While a complete rebuild would be ideal, it isn't feasible in the short to medium term due to a lack of funds. Rebuilding could cost upwards of £2 million, which would require external partnerships and long-term planning involving community consultation.

Immediate improvements include:

- Repairing the roof
- Upgrading lighting to LED for better energy efficiency and cost savings
- Redecorating the hall, lounge and bar

These improvements will be funded by local businesses offering community support, donated resources, and historic contingency funds designated for the community centre. By completing these upgrades, we can extend the building's life by 15–20 years, ensuring a safer and more welcoming space for residents, library users, and community groups.

NAPSURY PAVILION

The Napsbury Park sports fields and pavilion are leased to the Parish Council by St Albans District Council and are well-used by the community. Although the facilities are about 20 years old and may need updates in the future, we are currently conducting an environmental and economic audit. We'll report back on our findings and next steps in the coming months.

SHENLEY LANE CHANGING ROOMS

The Shenley Lane playing field is home to the Shenley Lane Changing Rooms, a cabin-style building that has reached the end of its lifespan. This facility is used by local football teams for changing and storage. The facility includes showers, toilets, and a small area to make refreshment.

Given its outdated condition, the Parish Council is considering options to repair or replace the building. We aim to provide a suitable, multi-purpose facility for all playing field users—not just football teams.

PARKING IN *London Colney*

A COMMUNITY CHALLENGE AND OPPORTUNITY

community events, such as services at our local churches and mosques, can also lead to temporary parking pressures. These events are valuable parts of our village life, and with a bit of thoughtful planning, we can balance accessibility with the needs of our growing community.

Parking in London Colney is a growing challenge as car ownership increases and many older garages are too small to accommodate modern vehicles. This situation is not unique to our village, and while it does bring frustrations, it also presents us with a chance to work together on a sustainable, long-term parking solution that meets the needs of residents, visitors, and local businesses.

A key concern is ensuring safe and accessible pavements for everyone. We've all seen situations where parked cars block pavements, creating difficulties for wheelchair users, parents with buggies, and those with mobility issues. Safety must remain a top priority, and with everyone's cooperation, we can make our streets more accessible and welcoming for all. In some areas, short-term parking on yellow lines—particularly near the Co-op and High Street—can cause access issues for delivery and refuse vehicles. Large

Parking enforcement is often seen as a necessary tool to encourage considerate parking and improve traffic flow, but it is not cheap. It deters illegal parking, so that any fine income is a fraction of the enforcement costs. New technologies, such as Automatic Number Plate Recognition (ANPR), can help monitor parking more efficiently, but again, they come with costs. Some improvements have been made. Haseldine Road car park has seen refreshed markings and overgrowth clearance, making it easier to use. While the cost of resurfacing the crumbling tarmac will be significant, it will need to be done soon!

Have Your Say PARKING SURVEY THIS SUMMER

One of the most important steps in building a long-term parking strategy for London Colney is hearing from you. This summer, a parking survey will be conducted, focusing on key areas like the High Street and Haseldine Road, where the most pressing issues are reported. The survey will be led by the district council, with the Parish Council actively engaged at every stage to ensure the community's voice is heard. This is your chance to share your experiences and ideas to help shape the future of parking in our village.

It's important to understand that this consultation is about gathering ideas and building the best possible solution—not simply counting votes. By contributing your views and presenting strong arguments, you will help create a parking strategy that balances the needs of residents, businesses, and visitors.

There has been lots of discussion about income budgeted by the district council for late 2025 and 2026. But this is all dependent on the work to be done over the summer and everyone is approaching the exercise with an open mind. Whilst there are those that believe charging for the Haseldine Road car park is the solution, there are many more that realise we have a complex situation and we need to look at all aspects of parking and come up with a longer term, holistic solution.

We want to hear from you—before, during, and after the consultation. Your input is invaluable in shaping the future of parking in London Colney. Please share your thoughts by emailing parking@londoncolney-pc.gov.uk, and your feedback will be received by all parish councillors. Let's work together to find solutions that make London Colney safer, more accessible, and easier to navigate for everyone.

Key Dates

Scoping Exercise by External Parking Expert: April – Mid-May

Draft Proposals for Review: Mid-May

Initial Public Meeting: Late May

Formal Consultation: Mid-July – Mid-August

Final Report Based on Consultation: Mid-September

Start of Implementation: October – November



LONDON COLNEY PRIMARY & NURSERY SCHOOL

Nursery

Here at London Colney Primary & Nursery School, we believe in children having the strongest start to their education as possible and place a strong emphasis on our Early Years Foundation Stage. Our EYFS is made up of our Nursery and Reception class and is taught and led by teachers and staff who know each and every child in their care.

If you are looking for a Nursery that has a fantastic ethos with an excellent transition into Primary School. Please come and see for yourself what our lovely School has to offer. Please contact the School office on 01727 823 283 should you wish to make an appointment.

**We are a happy, caring, fully inclusive school
with our children at the heart of all we do.**

London Colney Primary & Nursery School

Headteacher: Sarah Joyce

www.londoncolney.herts.sch.uk

Ofsted
... good school

YOUR VOTE

matters

ELECTIONS

1ST MAY

Elections on Thursday 1 May: make sure you are registered to vote and have photo ID Hertfordshire County Council elections are taking place on Thursday 1 May. There are ten county divisions in St Albans City & District, and all county councillor seats are up for election.

Poll cards will be sent in late-March and voters are asked to check to see which polling station they should attend as there have been some changes since last year.

VOTER ID

Voters are required to present an approved type of photo ID to vote at a polling station. This includes a current or expired UK passport or driver's licence, as long as the photograph looks like the voter.

Details of approved photo ID and information about how to apply for free voter ID (known as a Voter Authority Certificate) are available on the Electoral Commission's website: www.electoralcommission.org.uk/voting-and-elections/voter-id.

Alternatively, call the Electoral Commission's helpline on **0800 328 0280**. The deadline for applying for the Voter Authority Certificate is 5pm on Wednesday 23 April.

VOTING BY POST OR BY PROXY

Residents who are unable to get to their polling station on **Thursday 1 May** can apply to vote by post or proxy. The deadline for applying to vote by post (and for amending an existing postal or proxy vote) is 5pm on Monday 14 April, and to vote by proxy is 5pm on Wednesday 23 April. Most types of postal and proxy vote can be applied for online at www.gov.uk/apply-postal-vote or www.gov.uk/apply-proxy-vote.

Postal voters will be sent their postal voting packs a couple of weeks before the election. Post your pack back as soon as possible; it must reach St Albans City & District Council by 10pm on 1 May. The rules have changed around returning postal votes by any method other than via Royal Mail (for example, handing it in at a polling station). **Please refer to your postal vote poll card for further information.**

DO I NEED TO REGISTER?

People who were registered to vote in last year's elections and whose details have not changed will still be registered. You can check by emailing elections@stalbens.gov.uk or by calling Electoral Services on **01727 819294**.

If you are not already registered, a registration form is available to complete at www.gov.uk/register-to-vote.

The deadline for registering to vote at the 1 May elections is Friday 11 April.

FURTHER INFORMATION

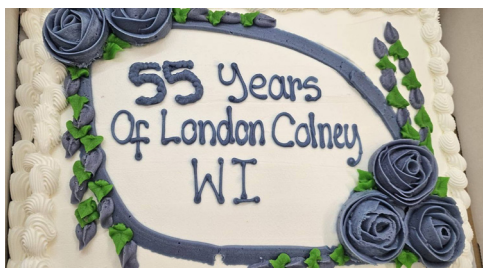
For further information, visit www.stalbans.gov.uk/voting-and-elections.



LONDON COLNEY WI

turns 55

London Colney WI had good reason to celebrate as they marked their 55th birthday with a huge party. Members wore the WI colours of green and purple and danced the night away to Mark and Alison Bilsby's Brushed Silk. The band played music through each of the decades, to mark the 55 years milestone. It was a fabulous evening with food, fizz and fun!



London Colney WI was founded in October 1969 with the shared aim of promoting friendship, education and the empowerment of women. Over the years the ladies of London Colney have enjoyed hundreds of speakers, events and activities. The group is stronger than ever, and is about to embark on a new programme of events for the next membership year (April 25-March 26). They are also introducing new sub-groups, so members can attend activities in addition to the monthly meeting.

LCWI Vice President, Ellen, said ...

“...we are passionate about our local community, in a thriving village the size of London Colney, we are proud to offer such a variety of events to our members. We are particularly excited to launch a set of sub-groups this year. Some of our wonderful members have volunteered to run a book club, pub quiz nights, theatre group, arts & crafts group and a walking group...”



reuse, recreate and repurpose your wardrobe.

We also have a Christmas party and craft evening run by our talented committee. There is something for everyone.....all for less than £5 per month!”



President Hilary gives a warm welcome to all members and visitors. “At every meeting we provide refreshments, biscuits (cake if we are lucky) and a raffle. As part of Hertfordshire & National Federation of WIs we have access to loads of fabulous events, campaigns and community activities. Come along and give us a try, you won't be disappointed.....we don't make jam and we don't sing Jerusalem”.

LCWI Treasurer/Programme Officer, Sarah, helps to devise the annual membership programme.

“2025 is going to be both entertaining and educational, with a strong focus on women and friendship.

Speakers' topics include Making Gin for the King, the Enigma of the Bra World, In/Exhale breathwork practices for women's wellbeing, beekeeping/honey tasting, Secrets of Highgate Cemetery, Greening Your Life, and Make Do and Mend:



The group meets on the second Tuesday of each month, 7.30pm, London Colney Community Centre,visitors £5 cash on the door. Interested in becoming a member? please email londoncolneywi@gmail.com for more info.

COME & bowl with us



Harperbury Bowls Club are so proud to announce that Jan Taylor, their Level One coach at Harperbury Bowls club has been short listed by Bowls England for the award of Coach of the Year. Jan lives in St Albans and has been a member of our club for many years. Jan holds a regular coaching session every Monday & Thursday afternoon at the club and at any other time requested by members. Jan is very keen for people to experience the game of bowls and is often at the club with local people who would like to have a go or anyone exploring bowls as a hobby .

New bowlers can be provided with one-to-one tuition and as their confidence is built, they are encouraged to have roll ups with other bowlers of a comparable level and as the season progresses, to play in friendly games so that they experience the full enjoyment of the sport. Jans' patience and communication skills are commendable.



She acknowledged the variety of learning needs amongst the new and experienced bowlers and tailor's her sessions to the individuals' needs.

This builds confidence in the new bowlers and allows them to progress

at their own pace whilst experienced bowlers appreciate the support to overcome any difficulties they may be experiencing. Jan takes the time to work with individuals trying multiple bowls size and weight from the clubs' store to ensure that bowlers avoid frustration by having the incorrect bowls. Jan does not limit this to new bowlers but encourages more senior bowlers to recognise the changes they may need as they become older.

Jan also arranges for County coaches to attend the Club for coaching days. She works with the coaches to structure the sessions to develop the ability and skills of all attending members. She carefully selects members of comparable experience and standard for each group to ensure all bowlers have a very positive learning experience. Harperbury Bowls club is extremely lucky to have Jan as one of their coaches. She is a valued member, coach and committee member.

Everyone at the club has their fingers crossed that she wins this award, but to even get on the short list is an achievement in itself. The Bowls England presentation lunch is on 22nd February in Leicester. If you fancy trying bowls get in touch. www.harperburybowls.org or find us on facebook Harperbury Bowls club.

LIBRARY hours

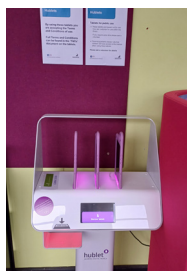
Following a successful recruitment campaign London Colney Community Library is now able to support increased opening hours. This is great news for users of one of the busiest community libraries in Hertfordshire.



From March the library will open on Fridays and Saturdays from 10am until 1pm. On Mondays, Tuesdays and Thursdays the library will continue to open from 1pm until 5pm.

The library volunteers have now formed a management committee and have signed a Partnership agreement with the County Council's Library Service.

We are always happy to welcome more volunteers who can spare a few hours to join our team. If you feel you would like to join us and you are over 18 please ask in the library.



More importantly opening 5 days a week gives the public even more opportunities, not only to borrow books, but to get on-line using the public PCs, or using one of the new Hublets to access on line services as well as printing and photocopying.

Homecare for a more active lifestyle



From complex care to getting out and about, talk to us today about the homecare your loved one needs to thrive.



01727 615 400
stalbans@walfinch.com
walfinch.com

Time to Thrive

Walfinch
 REDEFINING HOME CARE

THE BIRTH OF *Lowbell Lake* NATURE RESERVE

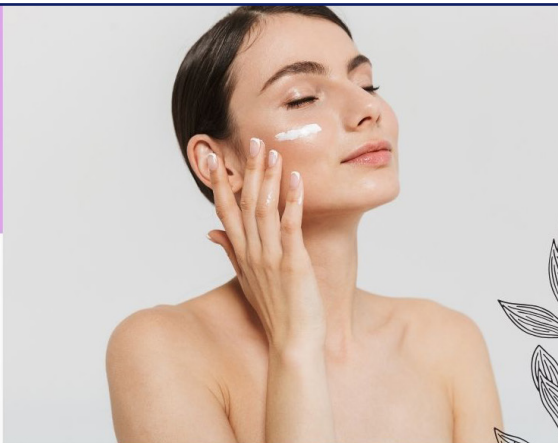
At the end of February, work was undertaken on a small section of Lowbell Lake, near Telford Bridge, to improve habitat quality and support local wildlife. As part of this initiative, a few small willow trees were coppiced, allowing for new marginal planting to take hold.

The removal of some overhanging trees has also allowed more light to reach the water, which will encourage marginal plants to grow. These plants will help filter the water, increase biodiversity, and create a safe haven for nesting birds.

The lake's natural beauty remains intact, with all mature trees left undisturbed. Additionally, the wire fencing at the water's edge was removed, improving access for ducks and other birdlife while enhancing the lake's overall appearance. To further strengthen natural coverage, whips will be planted along the bank leading up towards the road, reinforcing the area's green corridor and providing additional shelter for wildlife.

We ask that the boggy bank area remains untouched as a haven for wildlife, while other sections of the lake continue to be used for fishing, seating, and feeding the resident ducks. Here is born the Lowbell Lake Nature Reserve Section—a dedicated area to protect and encourage local biodiversity.





This small initiative dovetails into the wider Lowbell Lake project, contributing to ongoing efforts to ensure the lake continues to thrive as a valuable green space for both wildlife and the community.



DERMALOGICA SKINCARE FACIALS

10% OFF
YOUR FIRST TREATMENT
THROUGHOUT MARCH & APRIL

Facial treatments benefit your whole well being. Regular treatments give your skin a deep clean, rejuvenate the cell renewal process, stimulate collagen elasticity, plump, hydrate and maintain a youthful glowing skin.

-  **Prescription Skincare Facial £60**
-  **Age Smart Anti-Ageing Facial £67**
-  **LED Collagen Stimulation Facial £68**
-  **Pro Power Peel - home care included £110**

📞 01727 825 258 | 07449 773 297

🌐 WWW.APPLEONIA.CO.UK

📍 UNISEX SALON 9 HIGH STREET, LONDON COLNEY ST ALBANS, AL2 1RE

KEEPING LONDON COLNEY


**A COMMUNITY EFFORT**

Come rain or shine, dedicated volunteers have been steadfastly working to keep London Colney clean, tackling litter hotspots across the parish.

Our regular community litter picks, supported by passionate local residents, aim to restore pride in our shared spaces, ensuring that parks, streets, and public areas remain free from unsightly waste.

This ongoing commitment is making a tangible difference, reinforcing the importance of civic responsibility and environmental stewardship.

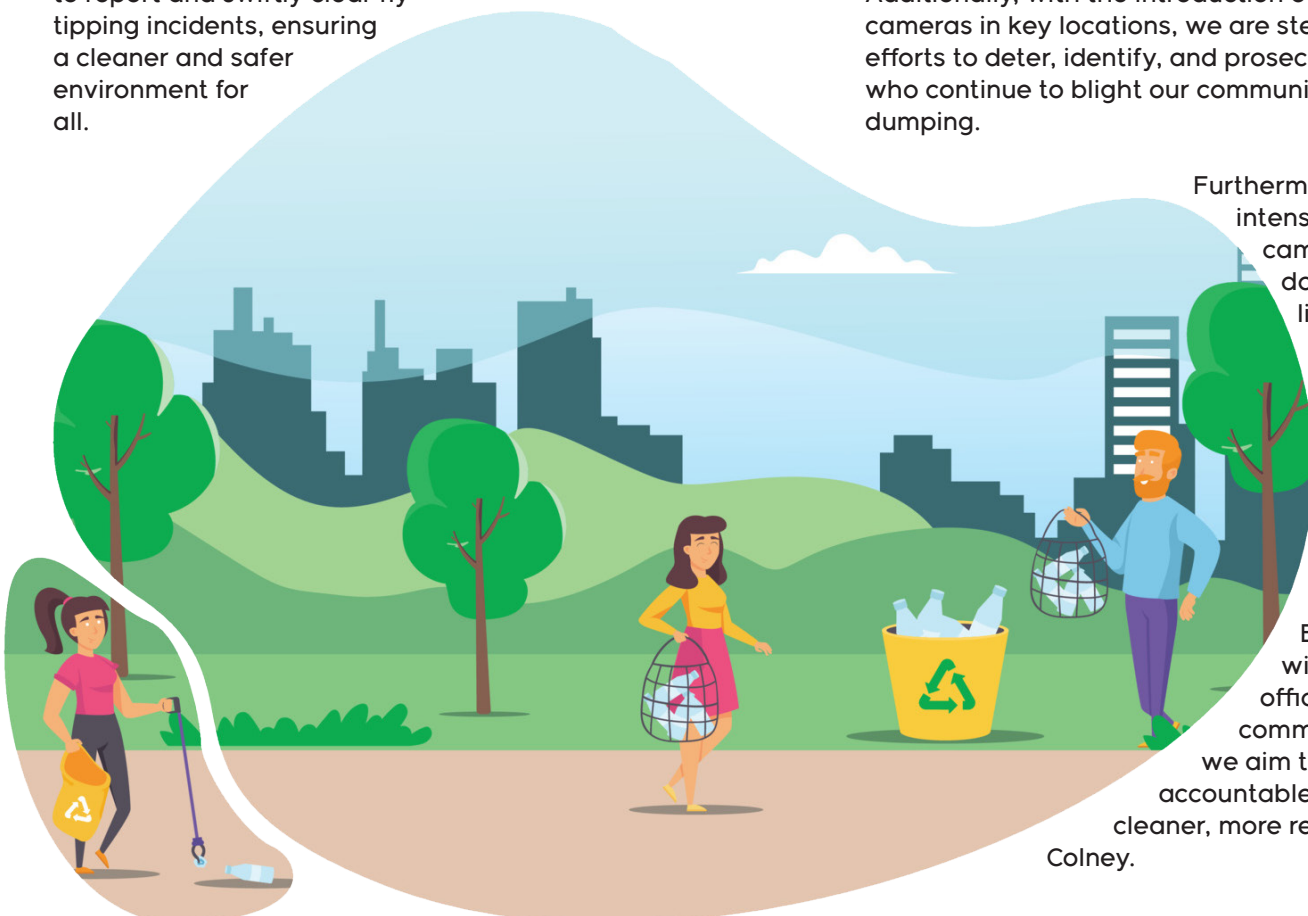
Litter hotspots continue to be a challenge, but through collaboration with Veolia, we've been able to report and swiftly clear fly-tipping incidents, ensuring a cleaner and safer environment for all.



Additionally, with the introduction of surveillance cameras in key locations, we are stepping up our efforts to deter, identify, and prosecute offenders who continue to blight our community with illegal dumping.

Furthermore, we are intensifying our campaign to combat dog fouling, littering, and fly-tipping through awareness, initiatives, increased patrols, and stricter enforcement measures.

By working closely with enforcement officers and community members, we aim to hold offenders accountable and promote a cleaner, more responsible London Colney.





NEW INITIATIVE: TURNING LITTER INTO COMMUNITY FUNDING

Building on our strong litter-picking foundation, we are thrilled to support an exciting new initiative led by the London Colney Scouts, Scout Leader, Ian Burnett, (photo below). This scheme will see drink cans collected during our litter picks set aside for recycling, alongside contributions from local businesses, schools, and community groups.



With the support of London Colney Parish Council and in partnership with Pearce, a local recycling company, the scheme will

generate match-funded donations per 100kg of collected cans, directly benefiting London Colney Scouts.

THIS INITIATIVE AIMS TO:

- Reduce recycling costs for local businesses.
- Focus recycling efforts on achieving tangible community benefits.
- Inspire more residents to engage in litter-picking and clean-up efforts.
- Serve as a scalable pilot for district-wide adoption.



LEADING BY EXAMPLE: REDUCING CARBON FOOTPRINT

London Colney Parish Council is taking a significant step in leading the charge towards reducing the carbon footprint of local travel.

We are pleased to announce that funding has been successfully secured, and a Cargo e-bike is now in operation in London Colney! This vital addition will significantly enhance the efficiency of our litter-picking and can collection efforts while reducing CO2 emissions. By integrating the e-bike into parish operations, we are actively cutting reliance on vans and fossil fuel powered vehicles, promoting cleaner air, and supporting sustainable transport solutions

The Cargo e-bike will be instrumental in reducing emissions, demonstrating our commitment

to sustainability, and inspiring the wider community to adopt greener travel habits. This leadership in sustainable transport not only sets a strong example for other councils but also encourages residents and local businesses to consider active travel alternatives.

In the coming weeks, you'll see the Cargo e-bike in action around the parish, supporting litter picks, community projects, and the Scouts' can collection initiative.

We welcome any community members who wish to get involved, whether through volunteering, donating cans, or supporting the broader campaign. Together, we can continue to make London Colney a cleaner, greener, and more sustainable place to live.

Thank you to all who contribute their time and effort to these initiatives – your dedication is truly making a difference.

Scan if you would like to join the London Colney Parish Council Litter Picking WhatsApp Group:

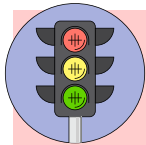


COMMUNITY FEEDBACK & *observations*

SEGRO EXHIBITIONS

The SEGRO Exhibition, held on the 18th and 19th of January 2025 at the London Colney Parish Council, provided a crucial platform for residents, stakeholders, and community representatives to engage with the proposed Strategic Rail Freight Interchange (SRFI) and its associated infrastructure changes.

The event highlighted a wide spectrum of community concerns, ranging from traffic congestion and environmental impact to sustainability measures and long-term regional implications. As discussions unfolded, several key themes emerged, underscoring the need for greater clarity, mitigation strategies, and enhanced community engagement.



TRAFFIC & INFRASTRUCTURE CHALLENGES

- **Traffic Management Strategy:** Concerns centred around increased HGV movements, prompting calls for robust contingency plans to address road congestion and closures.
- **Hedges Farm Roundabout:** A pressing demand for a clear timeline on its planning and construction to minimize disruption.
- **Congestion Hotspots:** The M25 (Bell Roundabout), A1(M), A414, and Shenley Lane are already under strain. Attendees warned of potential severe tailbacks impacting Colney Fields Retail Park.
- **Impact on the A414 Corridor:** Residents worry that increased lorry traffic will escalate noise and air pollution levels, particularly in the five-acre area behind the A414.
- **Impact on Residential Areas:** Homes backing onto the A1081 (London Colney Bypass) currently lack sound barriers, raising concerns over the 24/7 operation of the SRFI, including overnight freight train noise.
- **A414 Safety Issues:** The anticipated surge in HGV traffic raises safety concerns for key access points, including the rugby club and Irish club entrances.
- **Country Park Access Limitations:** The proposed infrastructure appears to limit access beyond the Education Centre, prompting calls for enhanced accessibility.
- **Declassification of Harper Lane & A5183:** Despite changes in their official designation, locals fear that lorries will continue using these routes to access warehouse sites like Parkbury and Verulam.
- **Diversion Risks:** SRFI-bound HGVs could be rerouted through local roads during peak congestion, leading to further strain on residential areas.
- **Flood Contingencies:** The lack of backup routes for HGVs if the A1081 floods again is a significant oversight.
- **Construction Disruptions:** The development of the A414 roundabout is expected to cause major upheaval, with potential ripple effects on surrounding areas.

ENVIRONMENTAL AND AIR QUALITY CONCERNS

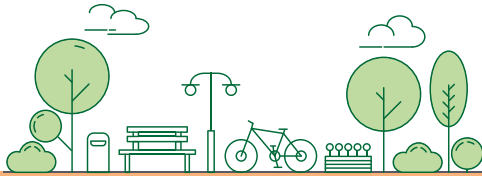
- **Noise Pollution & Mitigation:** Residents raised concerns about noise pollution, particularly in areas near Napsbury. Proposals for soundproof netting along the field were discussed as a potential solution.
- **Air Quality Monitoring:** Calls were made for air quality measurement stations along the site perimeter to track pollution levels and assess long-term environmental effects.
- **Bund Development:** Many sought updates on the status of the bund, a key feature designed to mitigate noise, light pollution, and airborne pollutants.

CONCLUSION: A CALL FOR TRANSPARENCY & COMMUNITY-FIRST SOLUTIONS

The SEGRO Exhibition sparked significant discussion, reinforcing the need for a proactive, transparent, and community-first approach to the SRFI's development.

While the project presents economic and logistical benefits, the concerns raised at the exhibition highlight the necessity for robust mitigation measures, clear communication, and genuine community engagement.

With significant road, environmental, and sustainability concerns still unresolved, the ball is now in SEGRO's court to address these pressing issues, provide firm commitments, and ensure that London Colney's voice is not just heard - but acted upon.



SUSTAINABILITY & ENVIRONMENTAL INITIATIVES

- Long-Term Sustainability Strategy: Residents emphasized the need for SEGRO to deliver a comprehensive plan detailing its long-term environmental commitments.
- Biodiversity Enhancement: Enthusiastic support for swift and bat boxes, nature reserves, and wildlife conservation efforts.
- Greening Initiatives: Expanded tree and shrub planting, with a particular focus on native whips, to boost local biodiversity.
- Sustainability Oversight Group: A call for a dedicated, community-led team to oversee SEGRO's sustainability measures and ensure accountability and transparency.
- Environmental Commitments: The community expects clear assurances that lost water features will be replaced and that all felled trees will be replanted.
- Wildlife Displacement & Advocacy: Concerns remain over habitat destruction and its catastrophic impact on wildlife. Who is advocating for displaced species? How will ecosystems be preserved?
- Wildlife Corridors as a Solution: Strong emphasis on integrating wildlife corridors to maintain ecological connectivity despite ongoing development pressures.

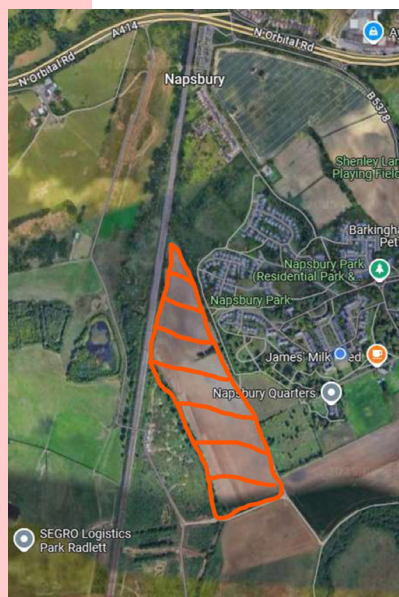
WOODLAND CREATION PROPOSAL

HCC are working on a proposal to apply for a Woodland Creation Planning Grant from the Forestry Commission, the area this relates to is highlighted in red on the map pictured.

If accepted, this would provide funding for them to develop a fully costed, detailed plan for what woodland creation on the site could look like. It will take 6-12 months to complete the plan, and this is on a no-obligation basis.

There has been no firm decision to proceed with tree planting and such a decision will not be taken until after the woodland creation plan is completed. The whole of the field between Napsbury Park and the railway is within scope of the plan.

Again, this can change during the planning process, so it doesn't mean that the whole field would necessarily be included in any final scheme. Local stakeholder engagement is part of the plan development process so you can expect to hear more about this in the coming months.



COMMUNITY CONSIDERATIONS

- Section 106 Funding Transparency: Many expressed scepticism about whether the Section 106 funds will directly benefit London Colney, given past instances of funding allocations bypassing the community.
- Napsbury Residents' Concerns: A significant issue remains: insufficient bunds to shield residents from potential noise and light pollution.
- Public Awareness Gaps: Many attendees were unaware of the planned public bypass at Park Street, highlighting a need for greater transparency.
- Country Park Development: Strong community interest in ensuring the Country Park remains an asset for London Colney, rather than a future SEGRO expansion target.
- Scale of the SRFI: The sheer size of the development raises questions about long-term impacts on London Colney's character, infrastructure, and daily life.
- Trust & Accountability: Doubts persist about SEGRO's commitment to fulfilling promises made to London Colney and Park Street.
- Smaller Roads at Risk: Calls for proactive measures to protect minor roads from increased HGV traffic.
- Community-Led Infrastructure Improvements: Opportunities exist for SEGRO to work with local stakeholders on projects such as modifications to the rugby club entrance and additional road safety enhancements.
- Future of the Country Park: Residents seek firm assurances that the Country Park will be protected from future SEGRO expansions



SCAN THE QR CODE FOR EXHIBITION INFORMATION



SCAN TO VISIT SEGRO WEBSITE

EXCITING TIMES FOR *Doodlebugs*



Doodlebugs is buzzing with excitement as they step into 2025 with a full-time schedule and a whole host of new creative sessions! The beloved local arts and crafts hub, co-founded by Mandi and Lenya, is now running throughout the day, welcoming more people of all ages into their ever-growing Doodlebug family.

Mandi shares her enthusiasm: "It's absolutely fantastic to be able to run throughout the day now and engage with more people of different generations and provide more to the community at large now that we are full-time!" Lenya adds, "It's such a pleasure meeting new members from all walks of life and becoming part of our Doodlebug family!"



Doodlebugs now welcomes home-educated children for special daytime sessions filled with fun, exploration, and hands-on creativity. These workshops provide a relaxed and engaging environment for children to learn through art while making new friends. If you're looking for a way for your child to de-stress the new 'Mindfulness Workshops' are designed to help children slow down, be present, and use as a form of relaxation, these sessions are all about promoting self-esteem, resilience, self-care and well-being. Bringing together the senior community, 'Creativi-Tea' is all about connection, conversation, and creativity over a good old-fashioned cuppa.

Regular attendee Angela shares, "There's nothing better than sharing a cuppa, meeting new friends, reconnecting with old ones, and exchanging creative skills." Yvonne agrees, adding, "I look forward to going to Creativi-Tea, sharing creative ideas, and catching up with everyone from the group." If that wasn't enough, for those who fancy an evening of creativity in a relaxed and friendly setting, 'Creative Connections' is the place to be.

It's a chance to try something new, have fun, and meet like-minded people. Sarah describes it as a "lovely relaxing atmosphere! Lots of ways to put your own spin on the picture." Sandra adds, "Learning new ways to create and interact with friends," while Sue sums it up perfectly: "Such a fun, supportive, and mindful evening!"

Doodlebugs is all about bringing the community together through creativity, well-being, and connection. For more details on sessions, workshops and how to get involved, visit www.doodlebugsartsandcrafts.co.uk



Relax and unwind while creating something beautiful. No experience required!

Unleash your creativity!

Doodlebugs

Creative Connections

7.30 - 9.30pm

Once a month

ARTS - CRAFTS - WELLNESS

London Colney Baptist Church Hall
Kings Road, London Colney,
St Albans AL2 1EN

Call us: 07706 549391
Email us: info@doodlebugsartsandcrafts.co.uk
Visit our website:
www.doodlebugsartsandcrafts.co.uk

Connect & Create through the generations

BE A PART OF OUR

Guides Gang

The first half of Spring Term 2025 we had a fantastic Chinese New Year themed meeting in which two of our Guides who have moved here to London Colney from Hong Kong, shared with us how they and their families celebrate the coming of the new year.



All of the Guides were absolutely enthralled with this meeting in which they experienced

making calligraphy art, writing 'Good Luck' in the Chinese language and sampling three freshly made cakes that are eaten for the celebrations. Thank you to the girls and their families for sharing with the Guiding family.

For 2025 we have one of our very own 1st London Colney Guides taking part in the St Albans Scouts & Girl Guides Gang Show that takes place annually at The Alban Arena.

Olivia Hurley has worked very hard for some months along with her other 120 cast members (ages 11 to 24) and adult volunteers to create a fantastic production that will take place each evening Wednesday 12th February to Saturday 15th February and including a Saturday matinee performance.

If you have not had the opportunity to experience The Gang Show for yourself, it is a highly professional show which will uplift you, have you in fits of hysterics and most of all be in awe of our diverse and talented young people of St Albans. St Albans Gang Show

has long history being traced back as far as 1939 and the current



annual shows as we know them from 1980. This is a great show for the larger community and not just for Guiding and Scouting so please take a look at the website to get a feel of what they do and pencil in that date for 2026 to join us for a spectacular performance. www.stalbansgangshow.com

If you would like any information with regards to London Colney Rainbows (ages 4 - 7), Brownies (ages 7 - 10) and Guides (ages 10 - 14) email contact@samanthahurleyart.com.

Providing
home care,
support and
companionship

01582
764305



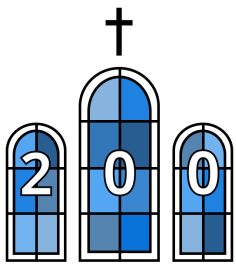
SCAN ME



Call us to discuss the range of specifically tailored services we can provide for you or an elderly loved one.

www.nannies4grannies.co.uk

ST PETER'S CHURCH IS

celebrating

ST PETER'S London Colney

It was a busy Christmas for St Peter's Church with many from our village engaging with our events and services. Thank you for joining us and celebrating the birth of Jesus. Christmas and the New Year festivities are now behind us as we are now amidst our season of Spring in watching new life appear all around.

The new life that our church now pivots towards is that which Jesus gave to all through the Easter glory of his resurrection. But we have a way to go yet until we gather around the fire, the new light of Christ, which will be lit outside St Peter's at 6am on Easter Day. The season of Lent is upon us, a time when Christians look to discipline themselves beyond their usual rule of life in preparation for the declaration of Easter.

Lent often overflows from our church congregation onto those looking on and those who have been handed down the accompanying tradition from past generations in their family. Have you given anything up for lent?

The Christian season of Lent is introspective where many, even beyond our church, look within themselves to ask questions and seek solutions. If you have yet to try the



Lenten tradition or maybe it's been a while since you have, it's worth undertaking, if only to place yourself on a different path to see what appears and what benefits may be gained for yourself and those around you.

I wonder how these regular seasons like lent and festivals like Christmas and Easter were undertaken and celebrated when the church community at St Peter's was founded all those years ago? I imagine it would have been the majority of the village that would have celebrated these church events back in the early 1800's.

An indication of this is that when the church was built and consecrated there were more seats in the church than the population of the entire village. Whilst our church today may only seat 2% of our village population, we hope through this year and next, many more in our village will help us to celebrate a milestone in our church history.

From June this year through to July next year, our Church we be holding a series of celebratory events, services and gatherings to celebrate its 200th anniversary. All are welcome and invited to help us celebrate our bicentenary.

As we head towards Easter, the central celebration in the Christian calendar, may the new Easter light shine in your life and in your homes, and may we welcome and invite you all to celebrate 200 years of St Peter's Church here in our village. Rev'd Tom Smith, Vicar

EASTER AT ST PETER'S CHURCH

17th April - 7.30pm
Maundy Thursday Service and The Watch

18th April
Good Friday Children's Service 11am
(with hot cross buns!)

20th April
Easter Sunday Dawn Service 6am (followed by champagne breakfast) and Parish Eucharist 10am
(followed by Easter Egg Hunt)

200 YEAR ANNIVERSARY EVENTS

7th June 2025
Summer Banquet and Art Auction

9th August
Historical Exhibition at the Village Day

20th September
Autumn Fayre on the Green

And more to look out for this year and next...

ART SALAD

news



Art Salad is a free monthly workshop, run by a local artist and some volunteers, providing older people and those with dementia a fun, creative experience, while enjoying a cup of tea and a chat in a relaxed and informal setting.

Our winter exhibition in December was a great success, where visitors enjoyed browsing the incredible artwork that had been created at Art Salad sessions throughout 2024!

Vital funds were raised from generous donations, and the sale of greeting cards featuring some of our



participants' favourite pieces, which proved hugely popular. Thanks to all who came and supported us!

We kicked off 2025 with a wonderful session in January, where local artist, Hazel Russell (@hazeymazeyful), kindly lent her time to lead the group through a workshop working in pastels, resulting in some beautiful woodland scenes, and some messy hands! It was a really fun and interesting session, thank you, Hazel.

We are excited to announce that our summer exhibition, "Peace by Piece", will be held in June, at the Caledon Community Centre. There will be a private view on the evening of Saturday 28th June, with the exhibition open to the public from 10am - 4pm on Sunday, 29th June.


Do join us as we showcase the incredible work that is produced at Art Salad. All donations and proceeds from exhibitions go directly back into the running costs of the group, to enable us to keep offering Art Salad contentment to as many people as possible - for FREE!

The beauty of Art Salad is that you do not need any artistic experience to join in. In fact, most of our participants had little or no previous involvement with art. There is no right or wrong way to be creative! The process of creating is therapeutic (and fun!), and we are always delighted to see how pleasantly surprised our participants are with what they are able to achieve.





Citizens Advice St Albans have been visiting local community groups in London Colney to promote the Healthy Hub. The Healthy Hub is a collection of local organisations which all serve your health and well-being. There are plenty of leaflets and posters in the area, including the library, Caledon Centre and St Peter's Church. Alternatively scan the QR code above or visit www.stalbans.gov.uk/healthy-hub

Whatever you are dealing with, there will be a source of help, and Citizens Advice can help and signpost you.



Contact Citizens Advice: **01727 811118**
 Mon-Thurs: 10am - 4pm | Fri: 10am - 1pm
www.citizensadvicestalbans.org.uk





If you, or someone you know, is interested in coming along to our sessions, simply turn up, there is no need to book - you will receive a warm welcome! We run from 10.30am - midday, on the second Wednesday every month (term time only).

If you would like more information, email info@artsalad.co.uk. We are grateful to London Colney Parish Council for their generosity in providing exhibition space in the Caledon Community Centre, and for their continued support with the use of the room for the monthly sessions.



“
We are
a good
school
”

London Colney Primary & Nursery School

Alexander Road, London Colney, Herts AL2 1JG

We believe that every child coming to our school is an individual and has something to offer. Our aim is to encourage, motivate and help all children reach their potential during the time they spend with us.

We now offer quality childcare before and after school from 7.30am – 6pm, for nursery through to Year 6, for children attending our school. The Laurels Club is run by London Colney Primary School staff and has wonderful facilities so that children feel happy, stimulated and safe.

If you would like to visit our lovely school and see for yourself what we have to offer, contact the School Office on 01727 823283 to arrange a visit. We look forward to seeing you!

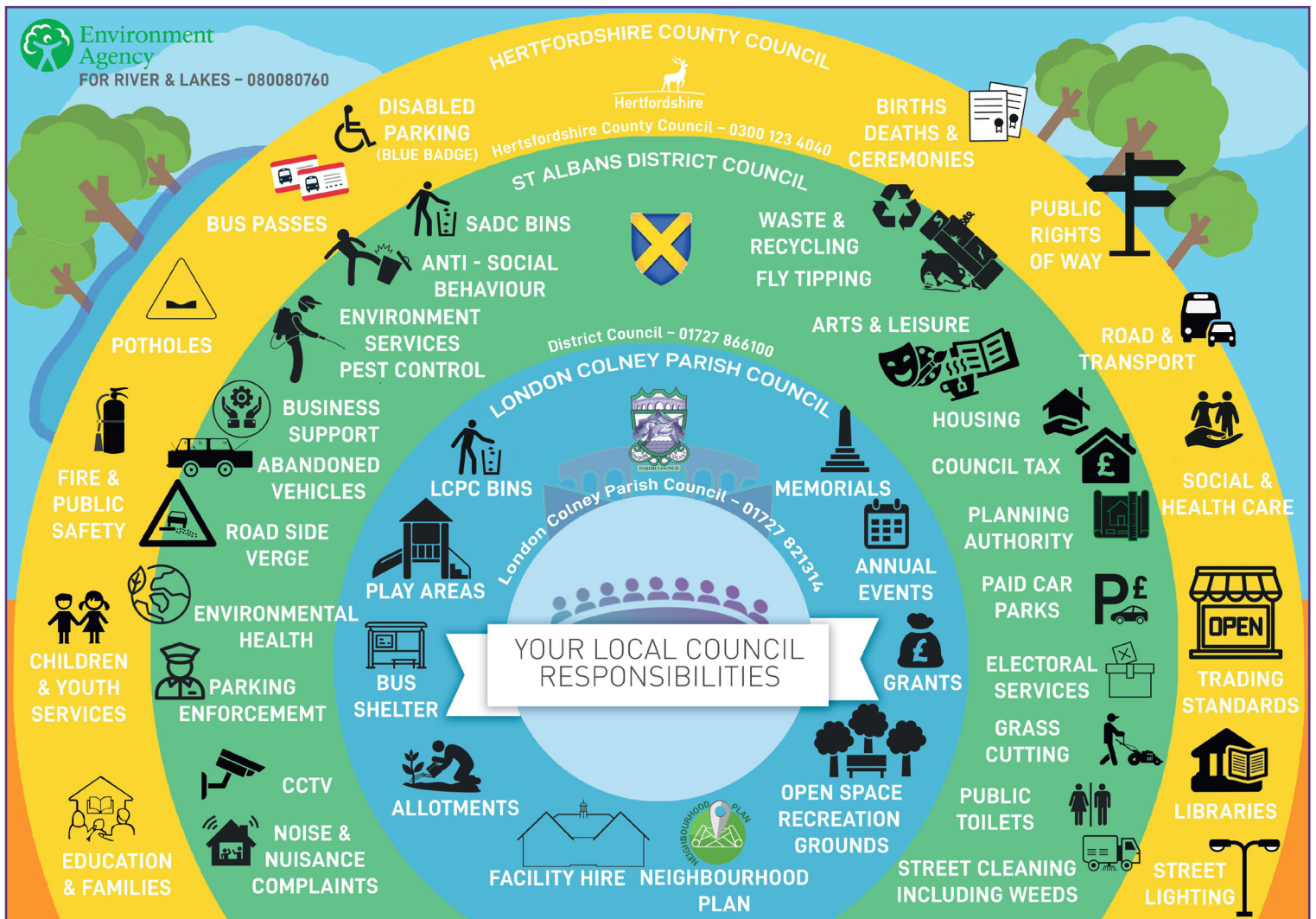
We are a happy, caring, fully inclusive school with our children at the heart of all we do.



London Colney Primary & Nursery School

Headteacher: Sarah Joyce

www.londoncolney.herts.sch.uk



**CARING
RESPONSIVE
LOCAL**

- Covering a wide range of healthcare needs
- Highly rated in the area



To register for GP services

- scan the QR code
- register via our website
- visit us for registration forms

Summerfield



HEALTH CENTRE

www.summerfieldhealthcentre.co.uk
Caledon Road, London Colney, AL2 1PU

BOWMANS Story

School communities include many different people. We weren't sure what the role of a governor involved so we interviewed Mr. Alderson, one of our school's Co-Chairs of Governors, over Teams to find out.

WHAT DO SCHOOL GOVERNORS DO?

Governors help guide the school by supporting the leaders with important decisions, give advice and make sure students are in a safe environment.

Why did you choose to be a governor at Bowmansgreen?
I moved to London Colney four years ago and wanted to give back to the community. Bowmansgreen's welcoming atmosphere inspired me to become a governor. It also helps me gain different perspectives, which benefits me in my job.

DO YOU LIKE BEING A GOVERNOR?

The governors come from diverse backgrounds. We have different skills and share a strong sense of trust, but also challenge one another. It is rewarding, fun, and educational. It's a great way to give back to the community, gain new experiences, and make a meaningful contribution to education. The committees meet three times a year each and the Full Governing Body meets five times a year to discuss decisions and plan for the future.

HOW MUCH DO YOU KNOW ABOUT OUR SCHOOL?

I started with little knowledge of Bowmansgreen, but I've learned a lot. This learning helps me provide better support and advice. Mrs. Fleming has a clear plan for school improvement, focusing on supporting all students to reach their potential and making every day special for the children.

HOW WOULD YOU LIKE TO DEVELOP THE GOVERNING BODY?

We currently have three vacancies for governors. People who are Interested can contact the school. With more governors, we can share the workload and continue improving the pupils' experiences.

WHAT MAKES BOWMANSGREEN SPECIAL?

Bowmansgreen Primary stands out for its welcoming atmosphere, great facilities and beautiful grounds. Our children are very fortunate. The staff and students create a positive, nurturing environment, making Bowmansgreen a great place to learn.

THANK YOU FOR BEING A GOVERNOR.

I love being a governor and appreciate the chance to contribute. From this interview, we've learned that being a governor involves a lot more than expected, and we're grateful

for their impact on our school. We appreciate their time and dedication in making our school amazing. (We also learned how to use AI to summarise Mr. Alderson's answers! The longer transcript can be found on our school website.)

By Levi and Zara

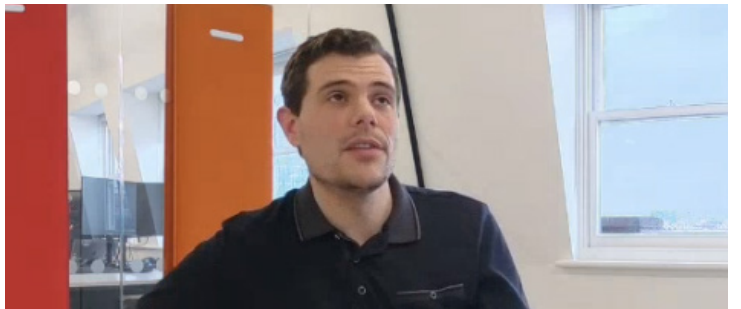
(Year 6 pupils at Bowmansgreen Primary School).



PLANNING WHAT QUESTIONS WE WERE GOING TO ASK.



INTERVIEWING OUR SCHOOL GOVERNOR ON MS TEAMS



MR ALDERSON TAKING TIME OUT OF WORK TO ANSWER OUR QUESTIONS.



TYPING UP THE ARTICLE.

YOUR LOCAL

Lunch Club

Our Lunch Club takes place every Tuesday and Thursday at the Caledon Community Centre opening at 11.45am.

We offer both a 2-course option of either a light starter followed by a main course or, a main course followed by a scrumptious dessert @ £7.00 per person.

Our 3-course option is £8.50 per person, and these options are available at both weekly sessions. We can cater for up to 25 lunch guests each session.

Our nutritionally balanced meals are homemade on site by our wonderful Chef. We are also very lucky to have an amazing team of Lunch Club volunteers who

help at each session, and we are very grateful for all the time and help they give.

Menu options are displayed in advance at the Caledon Community Centre and are up on the wall on the Lunch Club notice board.

We ask that if you do have any medical dietary requirements or allergies that you let us know in advance so that we can cater for your needs.

Lunch Club really is a wonderful way to meet and chat to new people over delicious home cooked food. We warmly welcome anyone who would like to join us.

See you there!



LONDON COLNEY

Village Day

Your community needs you!

If you're a local business or local community group, and you'd like to be part of our Village Day on Saturday 9 August, then we want to hear from you!

We're currently putting together our programme for the day and we want to showcase the very best of London Colney at this event.

Please email:
events@londoncolney-pc.gov.uk for more information.



Domestic abuse can affect anyone. It's time to end the silence.



We are here to listen to and signpost anyone affected by physical or sexual abuse, coercive control, psychological or financial abuse.



**Herts
Domestic
Abuse
Helpline**

08 088 088 088

9am - 4pm Weekends and Bank Holidays
9am - 9pm Weekdays

Confidential • Anonymous • Free

If you prefer, you can email us confidentially at kim@mailpurple.org

www.hertsdomesticabusehelpline.org

Registered charity no. 1184899

LONDON COLNEY & THE

Highwaymen

Throughout its history the existence and prosperity of London Colney has been closely associated with the road network. The London to Holyhead road passed through the village and the thoroughfare has been described as "one of the most celebrated of all the roads out of London, as it carried nearly all the traffic between the metropolis and Liverpool, Manchester and Birmingham besides being the great highway to Ireland, by way of Chester and Holyhead [and] the most important probably in the kingdom for the purposes of mail-coach travelling"

The stage coach era dawned in the 17th century. Horses were changed at intervals of 10 miles or so hence the name 'stage' coach. Inns along the route provided the opportunity for a change of horses also affording refreshment and accommodation to the passengers when required. During the peak years of horse-drawn coach travel there were over 20 inns in the village, some arranged in pairs, with the gentry receiving hospitality at one of the establishments whilst servants and coachmen were relegated to its neighbour.

Such was the volume of traffic on the road that highwaymen were attracted to the area and, for example, in 1692 John Churchill, later to be the victor of the Battle of Blenheim (1704) and ennobled the Duke of Marlborough, was relieved of 500 guineas whilst travelling near London Colney in 1692 by a gang thought to be responsible for other similar thefts.

A 1754 newspaper reported "On Saturday last a Gentleman and Lady were robbed in a Post Chaise between five and six in the afternoon between South Mimms and London Colney in Hertfordshire... by a single highwaymen, pretty well mounted on a light bay horse, dressed in a light coloured coat and waistcoat, black breeches and had on a mask."

A more dramatic robbery occurred in 1780 when a coach was held up by a mounted highwayman near the "18 mile



stone at Colney" and later stopped another coach threatening to "blow the Coachman's brains out". However two armed guards were travelling on the coach and one of them discharged "a Brace of Balls" from his flintlock pistol at the robber who was able to keep on his horse but the second guard fired another "Brace of Balls" which caused the culprit to flee; next day "in the morning he was found much wounded by the two men who shot him".

The man was discovered to be Richard Savage of Ipswich and several items of stolen property were found on him. In August 1770 Savage appeared at Hertford Assizes and was sentenced to death. However he was reprieved and the sentence commuted to transportation to a convict settlement in Australia. Still existing in the High Street near the junction with Haseldine Road the milestone (a Grade II listed monument) marks the 18 mile distance from London and recalls the coaching days of London Colney. Erected in the early 1700s weathering over time has almost obliterated the inscriptions on the rear and north sides. The cast iron plaque was attached in the mid 19th century and also marks the 7 mile distance from 'Barnett' and the 3 miles from St Albans.

London Colney Local History Society

NOTICE

Annual General Meeting; 7.30 pm Tuesday 20 May 2025
Caledon Community Centre;
Speaker Jon Mein 'The Inns & Alehouses of London Colney in the 18th & 19th centuries'

TAEKWON-DO

Get Fit & Learn Self-Defence

- * Opened 1994
- * Fully insured & Trusted
- * Multi award winning clubs
- * Classes by 3 time hall of famer
- * Classes by 8th Dan Master Coach

2 WEEKS FREE TRIAL

Beginners courses starting now

07960 476124

Only £30 a month
www.stalbanstaekwondo.com



Est. 1994
Hertfordshires multi award winning schools of Martial Arts

30
years of success

WHO DO I CALL?

GRASS VERGES, POT HOLES, STREET LIGHTS?

Herts County Council

www.hertfordshire.gov.uk

T: 0300 123 4040



FLY TIPPING / RUBBISH BINS



St Albans District Council

a.cleanerdistrict@stalbans.gov.uk

T: 01727 809019

PARKING ISSUES

St Albans District Council
T: 01727 845 283



CITIZENS ADVICE

T: 01727 811 118
W: www.castad.org



LONDON COLNEY W.I WOMENS INSTITUTE

Our Institute is flourishing with some excellent evenings with really interesting speakers. Our new programme will be published soon but here is a taster of what is to come.

TUESDAY, 11TH MARCH

We will learn the 'Secrets of Highgate Cemetery' when Gill Hodgekinson-Price will tell all about this huge, creepy but fascinating place.

TUESDAY, 8TH APRIL

Tonight we will have 'Introduction to Murder' from Nik Pringle of the Hertfordshire Police Historic Society. Maybe some of the victims ended up in Highgate Cemetery.

London Colney Women's Institute meet on the 2nd Tuesday of the month, 7.30 p.m. in the Community Centre, London Colney. There is always tea/coffee, biscuits and a raffle. You can come as a visitor for the first time for £5. The annual membership from April will be £51 but if you join before we have an early bird offer of £45 for the year, payable in March.

For more information, please email:
londoncolneywi@gmail.com

MINIMIZE CREATIVE SOLUTIONS

GRAPHIC DESIGNER - PHOTOGRAPHY - MARKETING

GET IN TOUCH WITH MINY TODAY
FOR YOUR DESIGN NEEDS

T: 07808 832 285 E: minimize@live.com



Ken Hodson

Local Computer Hardware and Software Repairs,
Upgrades and Advice for Home and Business
Tel. 07974 156743 / 01582 794723

Email enquiries@kenhodsoncomputerservices.co.uk
www.kenhodsoncomputerservices.co.uk

- No fix, no fee for all repairs – you have nothing to lose.
- Low hourly rate.
- Most repairs carried out in your home, if not the computer will be picked up from and delivered back to you.
- Problems with Windows / Applications / Internet / networks fixed.
- Friendly training and instruction available in plain English
- Advice given on upgrades – many older computers can be upgraded at a fraction of the cost of a new machine.
- Upgrades of hardware and software carried out.

London Colney Community Library

Your local library needs

YOU!

Would you like to join a team of
volunteers helping library
customers?

For further information about how
you can get involved, please contact:

libraries.communityservices@hertfordshire.gov.uk

Our current opening hours are:

Monday	1pm - 5pm
Tuesday	1pm - 5pm
Thursday	1pm - 5pm
Friday	10am - 1pm
Saturday	10am - 1pm



www.hertfordshire.gov.uk/libraries



WEEKLY EVENTS IN THE COMMUNITY

WOULD YOU LIKE TO SHARE YOUR GROUP OR ACTIVITY ON OUR WEBSITE?
FOLLOW US AND KEEP UP TO DATE WITH WHAT IS HAPPENING IN LONDON COLNEY

FACEBOOK: [@londoncolneyparish](#) VISIT: www.londoncolney-pc.gov.uk

WOULD YOU LIKE TO SHARE YOUR GROUP OR ACTIVITY ON OUR WEBSITE?
Please send us – a link to your website, your logo and image (optional) and information about your group/sport or activity such as when you meet, who it is aimed at, is there a cost, contact details, what you do. Email us at events@londoncolney-pc.gov.uk



DATES FOR
THE *Diary*

BOOZY BINGO
Saturday 19th
April



**CHANTRY ISLAND
PILGRIMAGE**
Wednesday 18 June



VILLAGE DAY
Saturday 9 August



HALLOWEEN
Sunday 26 October



FIREWORKS
Sunday 2 November



**CHRISTMAS LIGHT
SWITCH ON**
Sunday 30 November



CHRISTMAS PANTO
Sunday 7th
December



MONDAY

SEATED EXERCISE
10am - 11am
Caledon Community Centre
T: 01727 821314

**SEATED YOGA AND
RELAXATION**
11am - 12noon
Caledon Community Centre
T: 01727 821314

LINZIE'S MUSIC GROUP
10am - 10:45am
Napsbury Pavilion
Term Time
T: 07956 857589

London Colney Library
1pm - 5pm

TAE KWON DO
4pm Caledon Community Centre
T: Chris Snow - 07960 476124

KIDS @THE BASE
4:30 - 6pm
RETURNING SEPTEMBER
Caledon Community Centre
T: Shelley -0797 3466572

IRISH DANCING
6.30pm
Caledon Community Centre
T: Kathleen - 07702 232464

PILATES
6:45pm - 9pm
Morris Way Pavilion
T: Joanna - 07740 930263

TUESDAY

LINZIE'S MUSIC GROUP
10am - 10:45am
Napsbury Pavilion Term Time
T: 07956 857589

LUNCH CLUB
12 noon
Caledon Community Centre
T: 01727 821314

LONDON COLNEY LIBRARY
1pm - 5pm

OVER 60'S BINGO
1:30pm - 4pm
Caledon Community Centre
T: Angela 07811287359
T: Susan 07753803979

IRISH DANCING
6.30pm
Caledon Community Centre
T: Kathleen - 07702 232 464

WI
Every 2nd tuesday of the month
7:30PM - 9.30pm
Caledon Community Centre

FOOT HEALTH CLINIC
First Monday of the Month
Morris Way Pavilion
T: Sandra Gray - 07580572349

WEDNESDAY

ART SALAD
EVERY 2ND WEDNESDAY
OF THE MONTH
10:30pm - 12noon
Caledon Community Centre

SOCIAL CRAFT MORNING
10am to 12pm
Every other Wednesday
(next on 6 March)
Napsbury Pavillion

FACEBOOK @ MADHOUSE CRAFTSMUM

KEEP FIT
3pm - 4pm
Caledon Community Centre
T: Janet - 01438 840519

ZUMBA
7.15pm - 8:15pm
Caledon Community Centre
E: micheleplummer@talk21.com

PILATES
7pm - 9pm
Morris Way Pavilion
T: Joanna - 07740 930263

THURSDAY

COMPUTER FRIENDLY
9:30am - 11:30am
Caledon Community Centre
T: 01727 617 359

LINZIE'S MUSIC GROUP
10am - 10:45am
Napsbury Pavilion - Term Time
T: 07956 857589

SEATED EXERCISE
10am -11am
Caledon Community Centre
T: 01727 821314

**SEATED YOGA AND
RELAXATION**
11am - 12noon
Caledon Community Centre
T: 01727 821314

LUNCH CLUB
12noon
Caledon Community Centre
T: 01727 821314

**LONDON COLNEY
LIBRARY**
1pm - 5pm

TAE KWON DO
4pm
Caledon Community Centre
T: Chris Snow - 07960 476124

ROYAL BRITISH LEGIONS
Thursdays 7.30pm to 10.00pm
(fortnightly) Morris Way Pavilion
Rosemary 01582 763736

FRIDAY

OVER 50'S EXERCISE
10am - 11am
Caledon Community Centre
T: Nicki - 07984 928855

**LONDON COLNEY
LIBRARY**
10am - 1pm

**ST. ALBANS DISTRICT
FOOD BANK** 10am - 12noon
Caledon Community Centre
T: St. Albans Citizens Advice
01727 811 118

SATURDAY

LONDON COLNEY LIBRARY
10am - 1pm



ST. ALBANS BUILDERS LTD



Based in London Colney providing building services in
St Albans, Hertfordshire and North London.

5% discount to all London Colney residents

St Albans Builders are your number one choice for
House Building from design to completion,
Extensions and **Refurbishment**.

Our tradesmen are fully qualified and always provide
quality workmanship. All our building services are fully insured
and guaranteed for your peace of mind.

NHBC Registered.

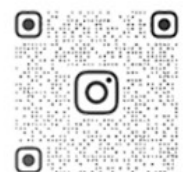


OFFICE: 0800 5677843

TEL: 01727 769483

www.stalbansbuilders.com

info@stalbanbuilders.com



STALBANSBUILDERS